

QUOTE
How long a minute is depends on which side of the bathroom door you're on.
—Anonymous

Printed on Recycled Paper

ONE HUNDRED-TWENTY-SECOND YEAR—No. 29

CHELSEA, MICHIGAN, WEDNESDAY, DECEMBER 9, 1992

20 Pages This Week Plus Supplement



ALLISON FRAYER gets a big hug from Santa last Friday night at the downtown UAW Hall. Santa made his first appearance in Chelsea Friday as part of the annual Festival of Lights. Allison, 4½, daughter of Bob and Chris Frayer of Chelsea, told Santa she'd like a Roller Blading Barbie.

New Study Projects Lower Student Growth In School District

Chelsea School District student population should continue to grow steadily over the next five years at all schools, but at a rate less than expected three years ago.

That's one conclusion from a new study by Stanfred Consultants, presented to the Chelsea Board of Education Monday night. The district commissioned the study from the firm as part of the process of planning for a new bond issue.

This year the district grew by just nine students, from 2,513 to 2,522 after growing by more than 100 students the year before. Part of the problem is that 37 high school students moved out of the district or switched into other programs.

"The big problem is we don't know if this is just a blip in the statistics or if this is the start of a trend," said superintendent Joe Piasecki.

"I suspect the area was hurt by the economy more than we thought."

If the economy picks up, the district might begin to grow by 100 students per year.

Stanfred completed a study several years ago as the district prepared for a bond issue proposal that was ultimately defeated by voters. Both studies break down projected growth into two categories—"most likely" and "high."

The previous Stanfred study estimated the total population for this year to be between 2,531 and 2,645 students.

Based on the new data, the new study substantially lowers the high estimates for the next three years. It also lowers the "most likely" categories, but by lesser numbers.

For example, the previous study indicated the population next year would be between 2,558 and 2,723 students. Estimates in the new study are 2,532 and 2,581.

For 1995-96 the new study drops its most likely forecast from 2,680 to 2,620 and its high forecast from 2,936 to 2,801.

It's not clear how the new figures will fit into the district's facilities planning.

What is clear, however, is the crowded situation at both North and South Elementary schools will continue to worsen, for at least another year. There are approximately 150 too many students at each school, district officials say, which puts a burden on the "core" facilities, such as the gym, cafeteria, and parking lots. The Stanfred figures predict the elementary population will level off over the next two years, then begin to decline slowly from 1995 to 1998.

Most of the growth from 1995-98 will take place at Beach Middle school, as the large current elementary population moves up.

The district plans to put together another facilities committee early next year to study what form a new bond issue should take. However, it's not likely a new proposal will be on the ballot until 1994.

In other board business Monday, Chelsea's Downtown Development Authority presented a check for \$44,729.28 to the district.

When DDA implemented its Tax Increment Financing Authority to pay for improvements downtown, it signed an agreement with the district say.

ing it would not take more than it actually needed to finance its bond payments. The check represents the excess amount it collected.

The district lost about \$108,000 to the DDA project in 1991-92.

TIFA takes the additional tax revenue generated by increased SEV downtown. The largest portion of that revenue would normally go to the school district.

The board was also given an update, via letters, about various school finance reform proposals being considered.

State Sen. Lana Pollack said she plans to re-introduce her package early next year. Her plan calls for exempting 60 percent or \$25,000 of a home's SEV from local school operating taxes. The difference would be made up by an increase in the state income tax from 4.8 to 6 percent.

There was also information about the Olmstead/Kearney Proposal, a more complicated plan which calls for a rollback of local school operating millage to 30 mills, with the difference in funding to be made up by the state.

Chelsea High school is deemed to be in compliance with accrediting stan-

dard established by the North Central Association, according to a letter from the association.

The board was informed that Washtenaw Intermediate School District will put another special education millage proposal on the ballot in a special election next March. The Chelsea board recently voted not to support another millage effort.

Several "What's Your Opinion" forms, devised by the district, were returned by area residents.

One man wrote "I believe you should emphasize comprehensive reading, math, and communications, both written and oral." He said, "I see athletics glorified while ignorance abounds in our community." He also suggested that the school district's Chelsea Challenge be printed on recycled paper.

A woman wrote that she is concerned about the well-being of her children while they are riding the bus, and suggested that each bus have an assistant to help the driver maintain good behavior.

Hardy Souls Brave Cold Weather for Festival of Lights

Hundreds of hardy souls braved freezing winds and icy streets to attend the Chelsea Festival of Lights last Friday. Seasonal temperatures did not deter the many who enjoyed the activities of the night.

The evening started at the Pierce Park Pavilion with the fifth annual Chelsea Rotary Club Tree of Lights. Chelsea Fair Queen Betsy Soroosh threw the switch to illuminate the Tree of Lights.

Member of the Chelsea High school band and choir, led by Bill Gourley and Steve Hinz, provided the holiday music.

The ceremony was brought to a dramatic end by Santa Claus' triumphal entry on a horse-drawn wagon.

The Festival continued downtown at Santa's workshop in the UAW Hall where Santa heard children's wishes and handed out candy canes. Spectators crowded the Living Creche, sponsored by the Chelsea Area Ministerial Society. Music was pro-

vided by the St. Mary's Church guitar choir. Choir members from St. Mary's, St. Paul's, North Lake United Methodist and Chelsea Free Methodist churches provided holiday music on downtown street corners.

The hay wagon rides down South St., courtesy of the Rod Powers family, had passengers all evening.

The Hospitality Suite at the VFW Hall, featuring free hot chocolate and cookies, was sponsored by the Chelsea Downtown Merchants Association. "We've had lots of people stop in," said Association president Daleen Harper. "The hot chocolate is just what everybody needed tonight."

The evening wrapped up with the Community Sing at the Depot, led by B.J. and Kris Hohnke. Donna Palmer directed the First United Methodist church Bell Choir. The Chelsea Lionesses awarded gift certificates donated by Winans Jewelry and the Downtown Merchants Association for best decorated homes and businesses.

Accused Church Officials Face Preliminary Exams

Two North Sharon Baptist church officials accused of molesting children in the church's Sunday school bus ministry are scheduled to face preliminary examinations in Washtenaw and Jackson counties this week.

Assistant Pastor Timothy Lee Leonard and Deacon Mark Foeller, both of Jackson county, each face preliminary exams in Jackson county on Thursday.

According to police investigators, the men lured children from low-income communities into the Sunday school ministry. The alleged assaults took place on the bus and on school grounds.

A preliminary examination in Washtenaw county is scheduled for Leonard today (Wednesday) before 14th District Court Judge Thomas Shea. Leonard is charged with four counts of first-degree criminal sexual conduct and three counts of second-degree criminal sexual conduct.

The hearing, which will determine whether there is enough evidence for Leonard to stand trial, will probably be closed to the public. Assistant prosecutor David Lady has indicated he will ask that the hearing be closed because he believes a packed courtroom might intimidate the three children involved, one age three and two age four.

In Jackson county, Foeller faces four counts of first-degree criminal sexual conduct, one count of second-degree criminal sexual conduct, and three counts of third-degree criminal sexual conduct. Leonard faces two counts of first-degree criminal sexual conduct. All alleged victims are under the age of 13.

Jackson County District Judge Carlene Walz ruled last week that Thursday's examination will also be closed to the public while the youngest

children testify. It will open when two older alleged victims are questioned.

On Dec. 16 Foeller is scheduled for a preliminary examination in Washtenaw county. He faces two counts of first degree criminal sexual conduct and two counts of second-degree criminal sexual conduct.

First-degree criminal sexual conduct, which includes penetration, carries a maximum life sentence in jail. Second-degree criminal sexual conduct, which includes fondling, carries a maximum 15-year penalty.

Consultant Gets Manager Job in City of Stanton

Chelsea Downtown Development Authority consultant Franz Mogdis will become the first manager of the City of Stanton on Jan. 4.

Stanton, 35 miles west of Mt. Pleasant, has about 2,000 residents.

Mogdis will continue as a consultant here because the new job is part-time.

"I'll be here one day a week to administer and run the DDA promotion

and marketing activities," Mogdis said.

Mogdis has a cottage in the Stanton area. He said he happened to be looking in the local newspaper last summer and noticed a news item that noted the city might be looking for a manager. He applied and didn't hear anything until November.

Mogdis will manage seven full-time employees, several part-time employees, and a department of public works. The city also has a small police department. He'll also be involved in budgeting and in trying to bring industry to the area.

Mogdis' position in Stanton may also be a plus for the village. Stanton became a home rule city last November, a process which Chelsea may embark upon soon.

"One of the things I want to get into quickly is how the home rule city process went, and how they dealt with their surrounding townships," Mogdis said.

Man Charges Ex-Wife with Assault

A Chelsea man filed assault charges against his ex-wife after an incident at the man's apartment on Harrison St. on Sunday, Dec. 6.

The Portage Lake woman was at the apartment to pick up her daughter at about 9:20 p.m. When she was told to wait outside, she became angry, forced the door open, struck the man on the chin with her forearm then landed a fist in his left eye, police said.

When she slammed the door, a shelf fell off the wall inside the apartment.



BOB WALKER of Gregory sold his ceramic sculptures last Saturday at the Holiday Craft Show at Chelsea High school. Walker, who works at the Chelsea landfill, began his hobby in 1982 while recovering from a motorcycle accident. His sister brought him some clay and during his 140 days at home he got hooked on the craft. He specializes in statues, death masks, and figurines.



NORTH SCHOOL fifth graders had two Revolutionary War characters as substitute teachers last week. Mrs. Barbara Winslow and Mr. James Adams, a 15-year-old soldier, discussed their lifestyles in 1781. They brought

horehound candy, read from books of the period, and played the popular games Button-Button and Hide The Thimble. And, as punishment, one student had to write a sentence 500 times.

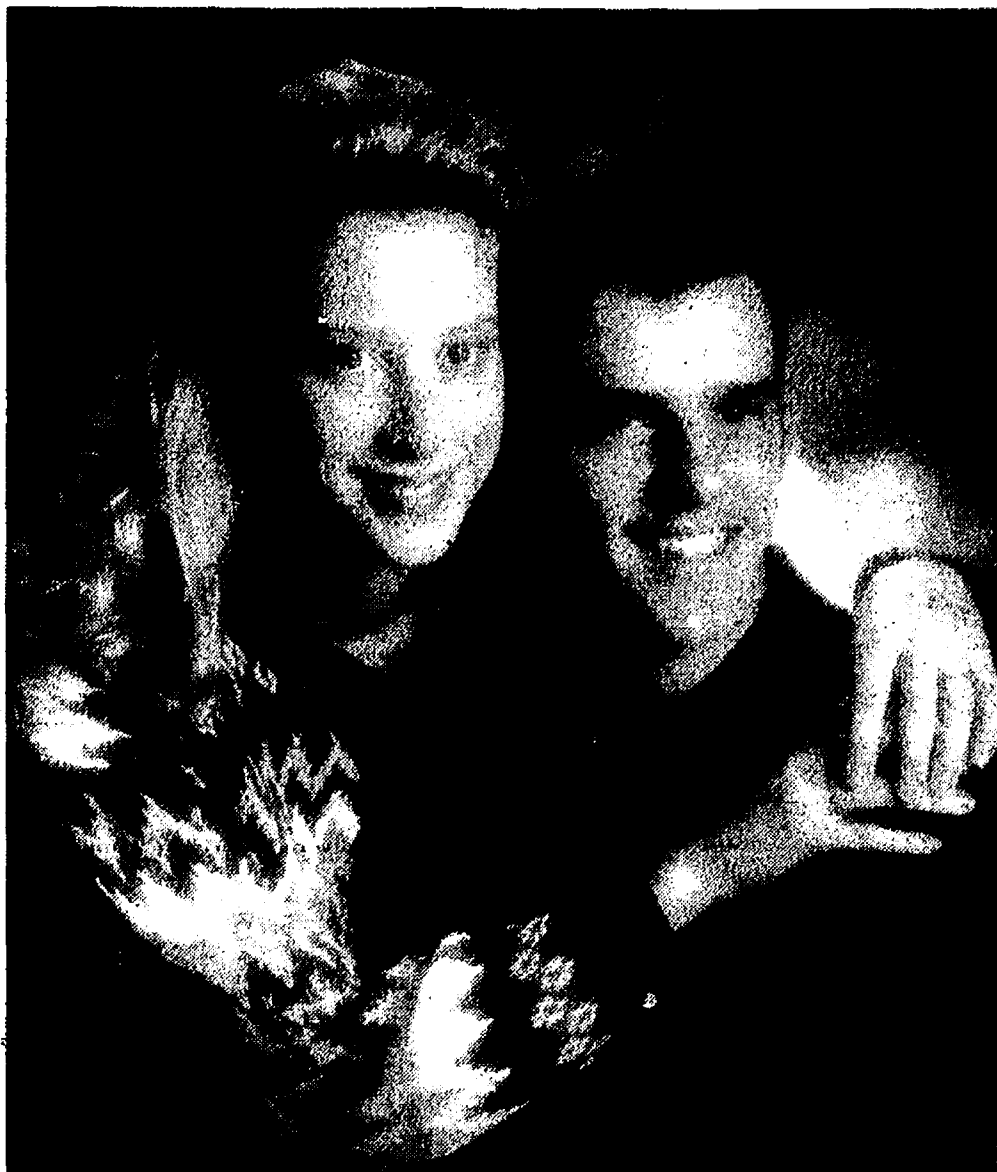
Lima Extension Group Sees Assortment of Christmas Gift Ideas

The smell of turkey, falling colorful leaves, and a forsythia bush in bloom? Yes! This was Nov. 18, as Laurie Gravelyn carried her boxes of cards and gift ideas into the home of Mary Ann Burgess to offer the Lima Extension group an inspiring morning of "At Home With Dayspring." Crawling baby dolls, crowing roosters, Christmas pillows, picture frames, jewelry—all this and much more.

While members got settled Janet McCalla opened this presentation with a humorous reading from Dear Abby to summarize for the group what was learned from the State Convention class titled "Humor Helps."

With the help of Alice Gardner as co-host, a delicious Thanksgiving luncheon was enjoyed before going on with a "busy" business meeting. Barb Wing, as program director, reminded members of lessons to be taken at the Extension office. Also a rewritten installation of officer ceremony was presented to be considered by the group. This ceremony was written to include the new National and State name for Extension (F.C.E.) Association for Family and Community Education.

With the help of Adeline Stone, Janet McCalla will provide a Christmas luncheon at her home Dec. 16 at 11:30 a.m. Members are to come with a \$3-\$4 Christmas gift exchange and canned vegetables or \$3 for Christmas Food Baskets. With careful shopping such as the week of Nov. 18, 10 cans of Del Monte vegetables could be purchased for \$3.



FREY-BUCKHANNON: Mr. and Mrs. Gary P. Frey of Grass Lake have announced the engagement of their daughter, Sonya, to Ryan L. Buckhannon, son of Mr. and Mrs. James Buckhannon of Michigan Center. A May 1 wedding is planned. The future bride is a student at Jackson Community College and is employed at Jackson Country Club. She is the granddaughter of Mr. and Mrs. Paul Widmayer of Manchester. The future bridegroom is working toward his doctorate in chiropractic medicine. He is employed at ADCO Products in Michigan Center.

Please Notify Us of Any Change in Address

GEE FARMS

14928 BUNKERHILL RD., STOCKBRIDGE 49285 (317)769-6772

OPEN 8 a.m. to Dark

- **FLORIDA CITRUS**
Semi-Load Has Arrived!
- **POINSETTIAS**
- **POTTED XMAS TREES**
- **FRUIT BASKETS**

We Ship Fruit Boxes via UPS

Heart Health Screening Set

A Heart Health Screening will be conducted by the Washtenaw County Public Health Division on Tuesday, Dec. 22, from 9:30 a.m. to 12:30 p.m. Participants will receive a blood pressure and cholesterol test, individual consultation about their results and information on how to decrease their risk of heart disease.

The screening will be held at the Adult Health Clinic located in the Washtenaw County Human Services Bldg., 535 Towner, Ypsilanti. For more information, call 484-7200.

Something New in therapy...

TRAUMA RESOLUTION

Individual & Group Sessions with Master Level Therapists

(313) 994-8914

SENIOR MENU & ACTIVITIES

Weeks of Dec. 9- Dec. 18
Food, Fun and Fellowship for Seniors
Senior Center, Faith in Action Bldg.
Chelsea Hospital Grounds
Lunch Reservations: 475-0190
Trip Reservations: 428-9242

Wednesday, Dec. 9—
Pinochle and euchre every Wednesday.

Past Matrons second Wednesday of each month

9:00 a.m.—Ceramics.
LUNCH—Macaroni beef skillet, green beans, garden vegetable salad, low calorie Italian dressing, French bread and margarine, two pear halves, milk.

1:00 p.m.—Fitness and bowling.

Thursday, Dec. 10—
9:30 a.m.—Euchre and pinochle.
LUNCH—Barbecued ribs, potato cones, cole slaw, muffin and butter, four apricot halves, milk.

1:00 p.m.—Kitchen Band.

Friday, Dec. 11—

LUNCH—Salmon patties with cream sauce, peas, carrots and pineapple salad, tropical fruit cocktail, milk.
6:00 p.m.—Christmas dinner.

Monday, Dec. 14—

9:30 a.m.—China painting.

LUNCH—Swiss steak with onions and gravy, au gratin potatoes, sliced tomatoes, French dressing, bread and butter, fruit cocktail, milk.

1:00 p.m.—Bingo.

Tuesday, Dec. 15—

LUNCH—Shepherd's pie, vegetables, mashed potatoes, spicy cherry Jell-O salad, whole wheat bread and butter, cookies, milk.

1:00 p.m.—Line dance.

Wednesday, Dec. 16—

9:00 a.m.—Ceramics.

10:00 a.m.—Blood pressure.

LUNCH—Baked ham with pineapple and sweet and sour sauce, mashed sweet potatoes, carrot and raisin salad, muffin and margarine, cranberry cake with whip cream, milk.

1:00 p.m.—Fitness and bowling.



Marcus and Heidi Kirby

Heidi Hosner, Marcus Kirby Marry at Cobblestone Farm

Heidi Hosner, formerly of Chelsea, and Marcus Kirby of Ann Arbor were married July 25 at Cobblestone Farm in Ann Arbor.

The Rev. Mary Alice Bestle performed the ceremony uniting the daughter of Jerry and Sue Hosner of Ann Arbor, formerly of Chelsea, and Kathleen Knutsen of Ann Arbor, formerly of Chelsea, with the son of Ruth Kirby and Tom Heilbronn of Ann Arbor.

Gretchen Knutsen of Chelsea was the maid of honor.

Bridesmaids were Stacie Hosner of Fenton and Amy Hosner, sisters of the bride, Kendra Kirby of Ann Arbor, sister of the bridegroom, Kim Marten of Ann Arbor, friend of the bride, and Lisa Iannelli of Ann Arbor, friend of the bridegroom.

The maid of honor and the bridesmaids wore peach floral dresses and baby breath wreaths in their hair.

The bride's mother wore a cream suit, and her step-mother wore a dusty pink flowing suit with black accents.

The bridegroom's mother wore a floral brocade suit with a peach pleated skirt.

Flowergirls were Alexa Jackson, Allyson Doan, and Jessyca Doan of Ann Arbor.

Best man was Scott Latimar of Ann Arbor.

Ushers were Charlie Hosner of Ann Arbor, brother of the bride, Tom Cernet of Ann Arbor, fiancé of the bride's mother, and Todd Tribble of Ann Arbor, friend of the bridegroom.

A reception was held at Cobblestone Farm. Guest book was attended by Tylen Greenleaf of Arizona, formerly of Chelsea.

The couple is living in Ann Arbor. The bride is a 1987 graduate of Chelsea High school.

The bridegroom is a 1985 graduate of Pioneer High school.

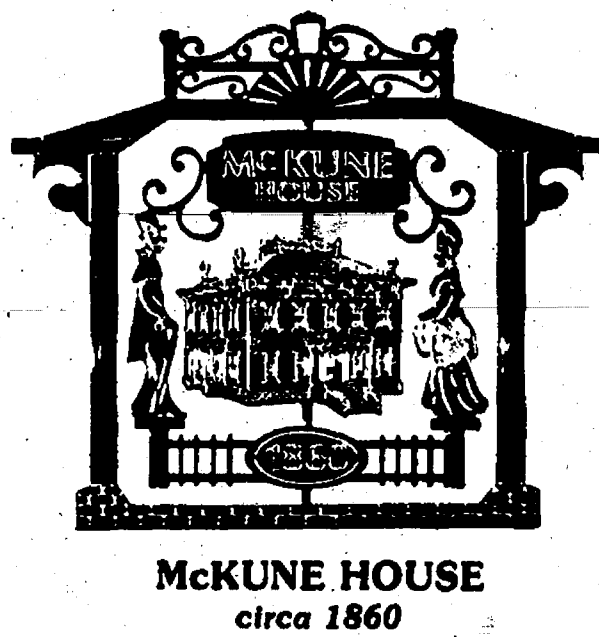
\$2.00 OFF WITH THIS AD

Make it a special Christmas
take a drive in the country.

- Free Belgium Horse Wagon Rides, Santa Claus & Elves Tunnel • Hot Beverages & Food Around Wood Burning Stove • Fragrant Wreaths • Arts & Crafts • Hand Saws Provided • Live Potted Trees

60,000 Christmas Trees
Open 9-6

SKYHORSE STATION
11000 Roberts Road, Stockbridge
For information & directions
call 517-851-7017



WINANS JEWELRY

Introduces a series of

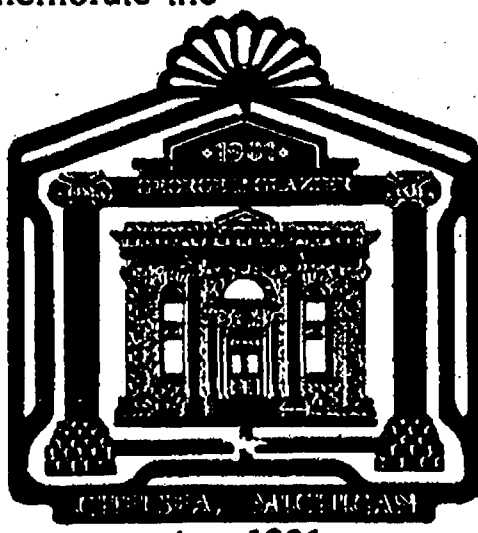
Historical, Chelsea Collectible Ornaments

Winans Jewelry is introducing a new series of four gold finished collectible ornaments that celebrate historical landmarks of the Village of Chelsea and the State of Michigan.

Beautifully designed and executed, the 24K gold finished ornaments of solid brass are manufactured in New England. A product made in America to celebrate local American history.

The series of four ornaments that commemorate the

restoration of historic Chelsea may be seen and purchased at Winans Jewelry. Each ornament is individually boxed and includes a card that notes its historical significance. Priced at \$12.00 to \$15.00, the ornaments may be purchased individually or as a complete set. The artifacts make ideal Christmas gifts or a wonderful remembrance for a loved one or a friend who has moved out of the Chelsea area, and are also a fine choice to mark other gift-giving occasions.



WINANS JEWELRY

108 S. Main St.
Downtown Chelsea
Ph. (313) 475-2622

Call

475-1371

To place your ad in
THE CHELSEA STANDARD

Subscribe to The Chelsea Standard!

IN TIME FOR THE HOLIDAYS:

BULLDOG PINS

JEWELRY

GIFT CERTIFICATES

FREE GIFT WRAPPING

Holiday Hours:
Daily 10 - 6 Sunday 1 - 4

ESPECIALLY
YOURS

- LADIES APPAREL -

CHELSEA SHOPPING CENTER
1060 S. Main St. • Chelsea • (313) 475-5930
"Putting your fashion needs together in a winning way"



DAYSRING GIFTS held a formal ribbon-cutting last Saturday morning to mark the Grand Opening of their new Main St. store opposite their previous location. On hand, from right, were store owner Laurie Gravelyn, village president Richard Steele, Mrs. Perry, owner of the building, and store manager Carolyn Chase.

Software Prize

(Continued from page one)

The school recently held a book fair and the proceeds will be used toward the purchase of a computer.

The software needs an MS DOS or PC DOS 3.1 or later system with a CD-ROM drive.

Give a Gift Subscription to The Chelsea Standard!

MIRRORS

- WALL MIRRORS
- CUSTOM ARCHES
- BI-FOLD DOORS
- DECORATOR DOORS

ALL SIZES
CUSTOM GLASS & MIRRORS
DESIGN & INSTALLATION

WOLVERINE GLASS WORKS

7444 DEXTER/ANN ARBOR RD.
426-5600 665-2223
A Division of Jackson Glass Works, Inc.

SENIOR DISCOUNTS
Marzec Mechanical
Heating & Air Conditioning

TRANE
Authorized Dealer
Furnace Replacements

Gas Furnace Inspection
\$50.00

475-3166

RESIDENTIAL & COMMERCIAL SALES & SERVICE

FREE ESTIMATES

Visit
Whiskers Gift Shop

at
Arborland Consumer Mall
in Ann Arbor
November to December, 1992

- T-Shirts
- Sweatshirts
- Pet Toys
- Jewelry
- Books
- Holiday Cards and Ornaments
- Personalized Pet Portraits



Whiskers says:
"Endless purrrrrchasing possibilities for the precious people and pets in your life!"

All proceeds go toward the care of HSHV's shelter animals.



Volunteers are needed for all shifts.
If you are interested in helping out,
Please Call Chris at (313) 662-5585. Thanks!

Holiday Cards

Also sold in Chelsea at
THE CHELSEA STANDARD

300 N. Main St., Chelsea
All proceeds benefit the animals at the
Humane Society of Huron Valley

VALUESPEAK

By JOSEPH WALKER

★ *Life's Simple Bounties* . . .

It didn't take much to make the Pilgrims feel thankful that first Thanksgiving—a few ripe pumpkins, a bushel of corn, a wild turkey that somehow wandered within rifle range. Historical rumor has it that when the Native Americans next door brought squash to the feast, the Pilgrims were actually grateful to receive it.

And (shudder) eat it. We aren't so easily impressed these days. Most Americans (not all, unfortunately, but most) will have plenty to eat on Thanksgiving—and every other day of the year, for that matter. Life's necessities—food, shelter, clothing and chocolate (not necessarily in that order)—are often taken for granted, leaving us to yearn only for those comparatively few things that we'd really, really, really like to have. Even though we don't really, really, really need them.

But every once in a while something happens to shake us up a bit and help us realize how much we are blessed. Often that "something" is tragic or, at the very least, controversial—like so many of the experiences we've had this year. And while no one would ever say that we are glad such things happen, we can at least be thankful for lessons learned and for renewed appreciation of life's simple bounties.

Take water, for example. Aside from oxygen, there is nothing more critical to human survival. Nor is there anything so readily accessible to us—most of the time. But for a few days this year hurricanes in Florida and Hawaii made clean, safe water a precious commodity in storm-ravaged areas. While some of the rest of us were thoughtlessly overwatering our lawns and gardens, hurricane victims were learning the hard way that water is a resource to be savored, not squandered. And something tells me that on some holiday tables this Thanksgiving, generously filled water glasses will be regarded with as much grateful appreciation as the turkey, the dressing or the candied yams.

Of course, many of those same people will be similarly appreciative of a sturdy, secure roof over their heads. And windows with glass in them. And

uncluttered roadways. And privacy. And the delicious privilege of running down to the store to pick up a can of cranberry sauce at the last minute without having to worry about dealing with endless lines and incredible prices.

There's nothing quite like surviving a hurricane for making you truly thankful for simple, everyday stuff like that.

Peace should also be high on the list of things we have learned to cherish through difficult experience. Just two Thanksgivings ago, hundreds of thousands of our compatriots were encamped on the Saudi Arabian desert preparing for battle. During the past year we have watched, horrified, as hostile factions in what used to be Yugoslavia have terrorized and tortured each other in a brutal civil war. While it's true that we have experienced our share of hostility (the Los Angeles riots), terror (the recent wave of violent car-jackings) and brutality (the 1992 election campaign), our crises have been short-lived and our confrontations—outside of the political arena, that is—relatively few. Please don't misunderstand—I'm not saying we don't need to continue to pray for peace at home and abroad. Those prayers should continue as long as there is cruelty, inhumanity and intolerance between people. But at least this year we don't have to pray for a world poised on the brink of war. For that we can all be thankful.

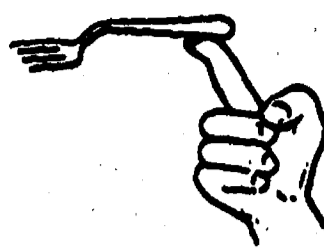
More than anything else, however, I hope this Thanksgiving finds you a little more inclined to give thanks for, if not with, your family—wherever and whatever your family may be. We've heard a lot of discussion this year about families and "family values"—some of it hurtful and divisive, if not downright destructive. Nothing could be more inappropriate, because nothing should be more unifying than a family. While we may well disagree as to exactly what "family values" are, none of us can doubt the significance of our own families in our lives. Regardless of our family situation—whether we're old or young, single or married, childless or proudly parental—we are part of a family. And we belong.

And if that sounds like a line straight out of "Murphy Brown" . . . well, I'm sorry. It's been a long year, and you can't help but pick up an extra thought here and there.

Not to mention something else to be thankful for.

(Joseph Walker is a bishop in The Church of Jesus Christ of Latter-day Saints.)

LIGHTEN UP.



High-fat, high-cholesterol foods can leave you with a heavy heart.

American Heart Association
© 1992, American Heart Association

Someone DOES Care . . .



Let Us Help
Call: **475-0111**
(SOS Will Help You)

Chelsea Help Line
In Cooperation with SOS

Shop In the Warmth of a Country Christmas

Central Street Station

3207 Central
Dexter, MI 48130

Holiday Hours
M-F 9:30-8
Sat. 9:30-6
Sun. 11-3



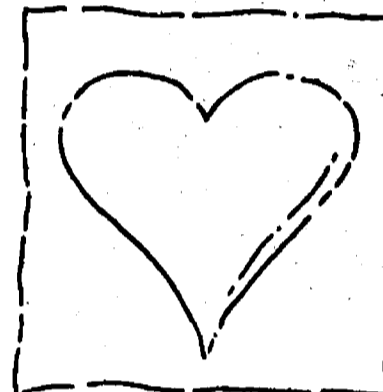
We have rooms full of gifts for all

- Country & Victorian Christmas Ornaments
- Hand Crafted Folk Art
- Dulcimer Music
- Hand Dipped Candles
- Christmas Cards
- Amish Furniture

Present this ad and Receive
20% Off
One Regular Priced Item
Good till 12/31/92

You'll Find Us At The Park—Across From the Gazebo

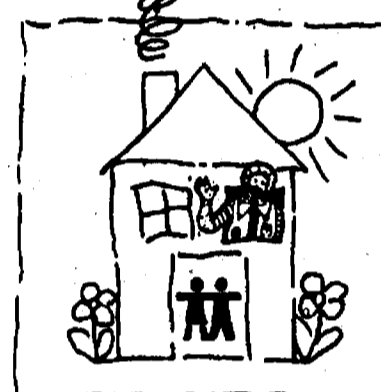
Ronald McDonald House and Cable Television.
Providing comfort in our community.



A heart.



A hope.



A home.

Give us a hand!
And get a great deal!

Help thousands of sick children and their families.
And get great savings on quality entertainment.

Give \$10.00 to the Ronald McDonald House, and receive FREE installation of Expanded Basic Cable or an upgrade to any premium channel.



For details call:

Clear Cablevision, Inc. What you want is what you get!

429-4923 439-8854 475-8631

529-2830 456-7069

Restrictions may apply. Offer expires 12/31/92.

"Chelsea is my hospital."



Michael Szymanski, MD
Family Practice

"In 10 years of being a family doctor in a small town, it's good to know that our community hospital has the advanced care and up-to-date technology my patients need—to stay healthy, and to get well. My patients also appreciate the personal touches that have become a trademark of this hospital . . . because, as I've come to learn, the best kind of healing takes place when people feel at home."

For information on any hospital service, call 313/475-1311.
For help finding a physician, call 313/475-4050.



Chelsea Community Hospital



The hospital for our community

Leadership Training Offered

Chelsea area residents interested in improving their knowledge of community structures, the external factors shaping their development, and how they can influence change, will benefit from a NEW 10-week leadership training program co-sponsored by Washtenaw Community College and the Chelsea Area Chamber of Commerce.

"Leadership Chelsea" will examine community structures, i.e. volunteer organizations and governmental units; educational and economic challenges; community action planning, and leadership styles.

The sessions begin Jan. 21 with Community Structure. This session provides a review of existing volunteer organizations, governmental units, health care and educational institutions, churches and community events. In subsequent weeks, on Thursdays from 4-6 p.m., participants will explore:

Quality of Life—Debate is one method participants in this session will use to identify major areas which directly impact the quality of life in the community.

Business and Industry—An overview of Chelsea's retail and industrial businesses will be provided.

Community Challenges—Participants will explore and debate community needs, challenges, priorities and opportunities.

Governmental Challenges—Economic development, village/township services, public safety, and intergovernmental co-operation will be discussed.

Coalition Building—Areas where working as a coalition is vital to community success, will be identified.

Leadership Skills, Part I—This session explores leadership styles, goal-setting, quality vs. quantity, volunteer recruitment, motivation and the "balance of commitment."

Leadership Skills, Part II—Participants will examine coalition

building, purposeful abandonment, how to conduct meetings, fund-raising and life-long learning opportunities.

Community Action Plan—This session summarizes the major program points and accomplishments. Participants will also debate and develop the first drafts of a Community Action Plan to be presented to the Chelsea Village Council and other organizations.

Attendance at the orientation and at least eight of ten sessions is mandatory for graduation from the program. A graduation dinner will be held for all successful participants.

The cost for the 10-week series is

\$125. Eight scholarships sponsored by local businesses are also available for Chelsea area residents requiring financial assistance. The scholarships are made possible by generous donations from Chelsea Lumber Co., Great Lakes Bancorp, Society Bank and Chelsea Area Chamber of Commerce. Each of these sponsors will be able to choose a scholarship recipient from their employees or members.

For more information, call the Chamber of Commerce at 475-1145 or Washtenaw Community College Western Regional Center at 475-5935.

Subscribe today to The Standard



SANTA CLAUS put smiles on the faces of Sonya Roberts, Sarah Poley, and Daniel Roberts at the UAW Hall last Friday. The old man listened to their Christmas wishes, passed out candy canes, and generally had a good time talking to the numerous children who turned out for his first visit of the year.



The Perfect Christmas Present


For the person who has everything:
A Travel Gift Certificate

Call
ACCENT ON TRAVEL
102 N. Main St., Chelsea Ph. 475-8630

Open Mon.-Tues.-Wed.-Fri., 9:30-5. Thurs., 9:30-7:30. Sat., 10-1

Record supplies of turkey at attractive retail prices are expected to cause record sales during the upcoming holiday season. But turkeys face strong competition from ample supplies of low-price pork.


USDA's Meat and Poultry Hotline now answers **NUTRITION** as well as **FOOD SAFETY** questions.





1-800-835-4855
Washington, DC • (202) 720-3333
Monday-Friday, 10-4 Eastern Time

A public service announcement of the publication and the U.S. Department of Agriculture

GIVE BLOOD, PLEASE.

American Red Cross 

*I heard the bells on Christmas Day
Their old familiar carols play,
And wild and sweet
The words repeat
Of peace on earth, good-will to men.*

—Longfellow, "Christmas Bells"

At this time of the year, we all hear tidings of "peace on earth"—in our songs, in Christmas cards, and so on. In many ways, we have come closer to peace on our planet. We have seen the end of the Cold War, have seen a larger role for the United Nations in settling disputes, and we have come to realize that it is just one planet that we all share. Still, true peace begins not in multinational committees, but within the hearts of individuals. Each of us can contribute to peace on earth by the way we interact with each other.

At the Cole Funeral Chapel, we try to bring calm to upsetting situations, and treat everybody with the dignity and respect that all people deserve.

COLE FUNERAL CHAPEL

Chelsea Funeral Home with the "HOME" Like Atmosphere

214 EAST MIDDLE ST. PHONE 475-1551

WARDROBE—BUILDER SALE!

PURCHASE A **SPORTCOAT OR BLAZER** AT REGULAR PRICE

SELECT A **PAIR OF PANTS FREE***



*ANY PANT IN THE STORE BUT WE RECOMMEND HAGGAR'S PLEATED GALLERY SLACK OR HAGGAR'S TRI-BLEND PLAIN FRONT SLACK. PANT ALTERATIONS AT COST

PURCHASE AT REGULAR PRICE **TWO ARROW DRESS SHIRTS**

SELECT A **FREE TIE**

ADD A **BELT** AT REGULAR PRICE

SELECT A **FREE PAIR OF SOCKS**



SALE CONTINUES THROUGH DEC. 24 OR AS SUPPLIES LAST

NEW OWNERS BRING BACK CONEY DOG DAYS!



CONEY DAYS CRAZE!

69¢ Coney Dogs Every Tuesday

If you're crazy about Coney Dogs, now's your chance to go wild! Because hot 'n' zesty Coney Dogs are specially priced right now—there's no limit. Come on in and satisfy your craving with the great taste of A&W—now at a great low price!

A taste to remember

CHELSEA A&W

1555 S. Main, Chelsea
Ph. 475-2055



A&W RESTAURANTS

Available at participating restaurants only
For a limited time only
© 1990 A&W RESTAURANTS, INC.

FOSTER'S MEN'S WEAR

DOWNTOWN CHELSEA — 313-475-1606

COMMUNITY CALENDAR



Monday--
 Lima Township Board meets the first Monday of each month at 8 p.m., Lima Township Hall, adv344f

Chelsea High School P.T.T. (Parents-Teachers Together), second Monday of each month, 7:30 p.m., in Board of Education Room.

Chelsea Recreation Council 7:30 p.m., fourth Monday of the month, Village Council chambers, 334f

Chelsea Kiwanis Club meets every Monday, 8:15 p.m. in the main dining room of Chelsea Community Hospital. For further information, phone John Knox, 475-6363, or write to P.O. Box 67.

Chelsea School Board meets the first and third Mondays of each month, 8 p.m., in the Board Room.

Chelsea Lionses, second Monday of each month at the Meeting Room in the Society Bank on M-48, Chelsea, at 7:30 p.m. Call 475-1791 for information.

Waterloo Area Historical Society Board of Directors meets the third Monday of each month 7:30 p.m., at Waterloo Farm Museum. For more information call Agnes Dikeman, 759-2219.

Tuesday--
 McKune Memorial Library Board, 7:30 p.m., third Tuesday of the month at McKune Memorial Library, 221 S. Main St. Individuals with disabilities requiring auxiliary aids or services should contact the director of the library. For information call 475-6722.

Dexter Township Board will meet the first and third Tuesdays of the month, 7:30 p.m., at Dexter Township Hall.

Rotary Club, 12 noon Tuesday, at Common Grill.

Chelsea Village Council, second and fourth Tuesday of month, 7:30 p.m., at Sylvan Township Hall, 112 W. Middle St. adv44f

Chelsea Village Planning Commission, third Tuesday of month, 7:30 p.m., at Sylvan Township Hall, 112 W. Middle St. adv44f

Sylvan Township Board regular meetings, first Tuesday of each month, 7 p.m. Sylvan Township hall, 112 W. Middle St.

American Business Women's Association 6:30 p.m. at the Chelsea Hospital fourth Tuesday of each month. Call 475-2041 for information.

Olive Lodge 156 F&M, Chelsea. Regular meeting, first Tuesday of each month.

Lima Township Planning Commission, third Tuesday of each month, 8 p.m., Lima Township Hall. adv300f

Lions Club, first and third Tuesday of every month, 8:45 p.m., at Chelsea Community Hospital. Ph. 475-7324 or write P.O. Box 121, Chelsea.

Chelsea Rod and Gun Club regular meeting, second Tuesday of each month at the clubhouse, Lingane Rd. 49f

Chelsea Rebekah Lodge No. 130 meets the first and third Tuesday of each month, at 7:30 p.m.

Chelsea Amateur Radio Club, Inc. fourth Tuesday of each month, 7 p.m., Society Bank basement.

Chelsea Chamber of Commerce Board of Directors meetings, second Tuesday, each month, noon, Chelsea Community Hospital, private dining room. 72

Downtown Development Authority, second Tuesday each month at 8 a.m. in the Chelsea Village Council chambers. It is a board of directors meeting. The public is welcome to attend.

Smokers Anonymous--Every Tuesday (except the first Tuesday of each month) at St. James Episcopal church, 2775 Broad St., Dexter, 7:30 to 8:30 p.m. Questions? Call 428-8656. 41f

Wednesday--
 Parents anonymous, a self-help group for abusive or potentially abusive parents, Wednesday 7 to 9 p.m. Separate children's group, same night. Call 475-3006 for information. Give only first name and phone number.

Friends of McKune Memorial Library meets at 7 p.m. on the first Wednesday of each month upstairs at the library. Meetings are occasionally held at the homes of members. Upon request, meetings may be scheduled at an alternate accessible site. For information call the library at 475-6722.

VFW Ladies Auxiliary, second Wednesday of each month, 7:30 p.m., 108 N. Main St.

Chelsea Zoning Board of Appeals, third Wednesday of month, 5 p.m., at Sylvan Township Hall, 112 W. Middle St. adv44f

Fraternal Order of Eagles, Ladies Auxiliary No. 2154 meet second, fourth Wednesday of each month, 7:30 p.m., 7590 Jackson Rd.

Chelsea Athletic Boosters membership meeting third Wednesday of each month; Board of Directors meet the second Wednesday; 7:30 p.m. Chelsea High Media Center.

OES Past Matrons dinner and meeting at Senior Citizen site, Faith in Action building, second Wednesday every month at 11:45 a.m. Ph. 475-1141 for reservations by Monday preceding meeting. 33-2

Pittsfield Union Grange, No. 882, meets the second Wednesday of each month, 8 p.m. at Pittsfield Grange Hall, 3337 Ann Arbor-Saline Rd., Ann Arbor. 311f

VFW Post 4076 meeting second Wednesday of month, 7:30 p.m. VFW Hall, 106 N. Main.

Friends of McKune Memorial Library meets at 7 p.m. first Wednesday of each month upstairs at McKune Memorial Library. Visitors are welcome.

Chelsea Depot Association will meet the first Wednesday of each month at 7 a.m. at the Chelsea Depot. Every third month, beginning with the month of November, the meetings will be at 7 p.m. All interested persons are welcome to attend.

Chelsea-Manchester Chapter No. 108, OES, meets the first Wednesday of each month, 7:30 p.m., Masonic Temple, 113 W. Middle.

Thursday--
 Dec. 17 meeting of the McKune Memorial Library Mystery Book Club has been cancelled. Regular meetings, third Thursday of each month, will resume on Thursday, Jan. 21, 1993.

As Parents We Will group meets third Thursday each month 7 p.m., Beach school media center. For information Cheryl Davis, 475-6131, ext. 28.

Chelsea Rod and Gun Club Auxiliary regular meeting, second Thursday of each month, 7:30, clubhouse, Lingane Rd.

Chelsea Area Players Board meeting second Thursday of each month, 7:30 p.m., at Society Bank meeting room. For more information call 475-2629.

American Legion Post No. 31. General meeting the first Thursday of each month at the post home, Cavanaugh Lake.

Knights of Columbus Women's Auxiliary, first Thursday of each month, 8 p.m. at K. of C. Hall, 20750 Old US-12.

Substance Abuse Lecture Series: Meetings: 7:15 p.m. every Thursday; Chelsea Community Hospital, Dining Room. Series is open to the public to provide awareness and education regarding various aspects of alcoholism or other chemical dependence abuse.

Friday--
 Friends of McKune Memorial Library "Grapevine" series will tour University Microfilms International on Friday, Dec. 11 at 1:30 p.m. Anyone interested in attending please call the library at 475-6732 to reserve a space. The group will leave the library promptly at 1 p.m. 29-2

Senior Citizens meet third Friday of every month for pot-luck dinner, games and cards, 8 p.m. at Senior Citizen Activities Center at Faith in Action Bldg., on Hospital grounds.

Everybody's Science

★ Chicken's Future Image: Even Leaner Meat
 By Vince Mazzola
 A diagnostic instrument for doctors is giving animal researchers an actual picture of the lean meat in chickens.

Chicken meat is relatively lean. Yet, U.S. Department of Agriculture scientists believe it can be made leaner.

One way is to breed broiler chickens that have more white breast meat and less tissue and abdominal fat, says animal scientist Aiva D. Mitchell of USDA's Agricultural Research Service.

That's where the diagnostic technique called magnetic resonance imaging, or MRI, is coming into play. Mitchell says poultry researchers can use MRI much the same way doctors do to get images of, for example, a patient's internal organs for a diagnosis.

What poultry researchers want to see are how much meat and fat are in a newly-bred chicken. They start by anesthetizing the bird to keep it motionless in the MRI chamber.

An image is displayed on a computer screen and printed on x-ray film. On the screen, the image can be moved around for an examination from all angles. And, a series of images can be translated into three-dimensional form on a color monitor.

"In poultry, the muscle and fat development can be followed from hatching until it reaches market weight," Mitchell says. At the end of the test, the bird will be unharmed and ready for breeding.

"Such images of a live chicken give researchers an instantaneous report on whether a new breed of bird will have leaner meat," he says. That's in contrast to the time spent now in breeding a chicken and then waiting while it grows.

EAR PIERCING FREE

with purchase of piercing earrings. Parental consent required under 18.

WINANS JEWELRY

THANK YOU

The Chelsea Lions and Lioness Clubs would like to thank the following business organizations and people who helped make our annual Haunted House a success.

Chelsea Lumber Co.	Kathy Gunderson	Cindy Mitchell
Gina's Cafe	Cheryl Johnson	Mike Mitchell
Subway Shop	Liz Kaminsky	Teresa Murphy
Mike Beno	Sarah Kaminsky	Gary Reed
Charma Bouquette	Mary Kazil	Josh Tabaka
Adam Daniel	Randy Kvarnberg	Karen Tabaka
Jerrold Daniel	Brian Meyer	Casey Wescott

Beware says Donald Duck on your 16th Birthday (December 13th) **JASON VALCHINE** Love, Mom, Dad, Mark, Eric, Nick and Cinnamon

Guess who this is? Happy Birthday December 17th Love, Your Family

Happy 22nd Anniversary on December 12th **TYLENE & RICK** Love, Mom & Eddie

Happy 5th Birthday Nicholas! (December 9th) Love, Mom, Dad and Emily

April:

Take A Chance On Me!

Gimme a break, will ya?

Dennis M. McDonald CPA
 Specializing in Tax Preparation and Monthly Accounting for Small Business
 747-8992 3001 South State St., #1010
 475-3228 Ann Arbor, MI 48108

Over 19 Years of Satisfied Customers
DON POPPENGER
 Used Car Sales PALMER MOTOR SALES
 475-1800
 475-3650
 See Don for Your Next New or Used, Car or Truck.
 You'll be happy-you did!

Next time you need flowers, TRY US!
 Serving the Chelsea area with FRESH FLOWERS - PLANTS BALLOONS & CREATIVE ARRANGEMENTS
 North end of Downtown across from Jiffy Mix in the Sylvan Building
MAIN STREET FLOWER SHOP
 114 N. Main, Chelsea Ph. 475-3040

Don't be a heartbreaker
 Eat less saturated fat.

 American Heart Association
 WE'RE FIGHTING FOR YOUR LIFE

The destructive gypsy moth each year defoliates over four million acres of forests and shade trees. Scientists are trying to find new ways to prevent damage to the 287-million acres of U.S. forest land that are susceptible to the gypsy moth.

SUBSCRIPTION ORDER FORM for The Chelsea Standard

Name _____
 Address _____
 City _____ State _____ Zip _____

clip and send with payment in advance to THE CHELSEA STANDARD, 300 N. MAIN, CHELSEA MI 48118-1502

BY MAIL DELIVERY

\$15/year, \$5/6 mos.	\$78/yr., \$10/6 mos.	<input type="checkbox"/> Renewal
In Washtenaw County, Grass Lake, Graylog, Hamburg, Munith, Northville, Pinckney, Plymouth, South Lyon & Stockbridge	Elsewhere in Michigan \$20/yr., \$11/6 mos. Outside Michigan (in U.S.)	<input type="checkbox"/> New Subscription

THE LOG CABIN RESTAURANT

6714 Clear Lake Rd. (3 miles north of I-94 off Exit 153)
 IN THE HEART OF THE WATERLOO RECREATION AREA
 Comfortable Atmosphere - Good Food - Friendly Service 475-7169

ALL YOU CAN EAT SPECIALS:
 Wed: Spaghetti or Lasagna.....\$5.95
 Thur: BBQ Country Pork Ribs.....\$6.95
 Fri: Fish Fry, PUNCH OR COO.....\$5.95
 ALL INCLUDE OUR SOUP-N-SALAD BAR

HALF PRICE SPECIALS!!!
 WITH THIS AD (EXPIRES 12/30/92)
 Buy one dinner, get second of equal or less value for half price.
 OR
 Buy one pizza, get second of equal or less value for half price.

PIZZAS
 (EATING OR CARRY OUT)
 Large 16" Super Only \$12.95

SATURDAY NIGHTS PRIME RIB DINNER
 SERVED WITH YOUR CHOICE OF POTATO, ROLL, AND OUR SOUP-N-SALAD BAR
 Only \$9.95

WINTER HOURS:
 Sunday.....9 a.m.-7 p.m.
 Monday.....11 a.m.-2 p.m.
 Tuesday.....11 a.m.-2 p.m.
 Wednesday.....11 a.m.-8 p.m.
 Thursday.....11 a.m.-8 p.m.
 Friday.....11 a.m.-8 p.m.
 Saturday.....9 a.m.-8 p.m.

BEST HAMBURGERS AROUND!! WE ALSO:
 •Have a Soup-n-Salad Bar with Home-Made Soups and Chili.
 •Serve Beer and Wine.
 •Have a large selection of Fresh Home-Made Pies.
 •Offer Senior Citizens Discounts.
 •Serve Breakfast anytime.
 •Offer A Kids Menu

BEHIND THE HEADLINES:

Term Limits Haunt Congress

Before members of the new Congress settle down in their seats, they'd better look over their shoulders at a political steamroller bearing down on them. It's a voter initiative called term limits.

By Philip C. Clarke

Measures that would for the first time restrict the length of time anyone could serve in Congress swept to victory in all 14 states where they were on the ballot last month. In most cases, the limit would be 12 years for senators and 6 years for representatives. Supporters have called the movement a necessary reform to prevent incumbents from entrenching themselves in lifetime careers in Congress—a kind of throw-the-bums-out effort, to use the common vernacular.

Despite the decisiveness of the vote in 14 states, however, critics served notice they will challenge the constitutionality of the measures in federal court. Hours after Florida voters approved term limits by a 3 to 1 margin, a suit was filed in U.S. District Court in Tallahassee, seeking to block the new rules. Similar challenges are expected elsewhere.

Congressional incumbents and their allies have cause for concern. Term limits passed thus far would subject about one-third of Congress to mandatory turnover—or 28 senators and 150 representatives. In addition to Florida, voters approved the measure in California, Ohio, Arizona, Arkansas, Nebraska, Michigan, Missouri, Montana, Oregon, North Dakota, South Dakota, Wyoming and Washington.

Since they control both Houses of Congress, Democrats not surprisingly oppose term limits. So does President-elect Clinton. George Bush, on the other hand, liked the idea, saying that since presidents are limited to two terms, why not Congress? It's a good question. How the courts will rule is another matter.

The liberal New York Times argues that the allure of term limits is "deceptive," and would only make matters worse. "In truth," said the Times, "it's the sure way to throw the baby out with the bath water, ejecting valuable, experienced leaders along with the ordinary and the bad. Moreover, it denies voters their fundamental freedom to vote for anyone they choose."

Making the constitutional case for term limits are Neil Gorsuch, a Marshall scholar at Oxford, and Michael Guzman, a legal assistant at the Iran-U.S. Claims Tribunal in the Hague. Writing in the Wall Street Journal, Gorsuch and Guzman argue that term limits are similar to other election regulations that courts already have approved. "Rather than flatly forbidding an incumbent from running

again," they point out, "most of the voter initiatives would simply deny him or her a spot on the printed ballot for a period of four years. During this period an incumbent may wage a write-in candidacy and retain his or her seat if they win."

Furthermore, say Gorsuch and Guzman, the Constitution itself gives states clear authority to impose ballot-access rules. "Article I, Section IV specifically empowers states to regulate the 'manner' of congressional elections... term limits are thus motivated by the same ideals that motivated the Framers of the Constitution—a desire to secure broad political participation and promote a representative legislature."

The idea of term limits actually is older than the Republic itself. But it lay dormant until 1990 when Colorado voted 12-year limits on its senators and representatives. It gained momentum the same year in Oklahoma, where a referendum set limits for state legislators.

Nonetheless, Democratic House Speaker Tom Foley of Washington, who won re-election in November, has vowed to carry the case to the Supreme Court. Term limits, he insists, are unconstitutional, arguing:

"No, none, no legal case can be made for them." Maintaining the opposite view is Jim Coyne, a former Republican congressman from Pennsylvania who organized Americans To Limit Congressional Terms, one of many such grass-roots groups. Said Coyne: "We view this as an unstoppable tidal wave."

Distributed by America's Future
P.O. Box 1828, Milford Pa.

Standard Want Ads
Get Quick Results!

Convenient Weekly Delivery

in each Wednesday's mail

for less than 29¢ each week

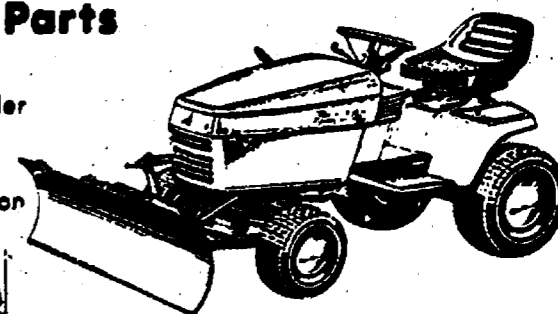
The Chelsea Standard

Simplicity

Sales, Service, Parts

Model LTH

- 12.5 h.p. Vanguard twin cylinder engine
- 38" axle-mounted mower
- Deluxe hydrostatic transmission



12.5 LTH 38

Dexter Rental-Dexter
3629 Central St. 426-2216

Open Mon.-Sat.,
8 a.m. to 6 p.m.



MARY TRACY of Stockbridge sold her laquered bread and wicker baskets at last Saturday's Holiday Craft Show at Chelsea High school. The event was held to benefit the Chelsea Senior Citizens organization. Tracy calls her business Ellie Mae's Bakery.



HOLIDAY CRAFTS fashioned from homegrown wheat by Sandy Barkman were on display at last Saturday's Holiday Craft Show at Chelsea High school to benefit Chelsea Senior Citizens. Here, Sandy works on a star ornament.

Tell Them You Read It in The Standard

Happy HOLIDAYS

FARMERS SUPPLY

122 JACKSON STREET, CHELSEA
East of Main St. at the railroad • (313) 475-1777

Exciting Gift Ideas from A to Z...

<p>Ant Farms Beer-Making supplies*Bird Baths*Bandanas*Brooms Cow Bells*Pet Cages, Combs, Collars Deer Blocks*Dog Houses Extra Large Clothes, Electric Fencing Feed*Fencing*Farm Implements*Fertilizer Spreaders Gloves*Gardening tools and supplies Houses for Birds, Cats & Dogs*Horse Products*Hats*Halters Ice Melt and Snow Shovels Jeans and Workshirts by OshKosh Kitty Mousie Toys*Pocket Knives Leashes & Collars*Live Traps Much more than we can list Netting for Fruit Trees</p>	<p>OshKosh Work Clothes Pet Products*Peanuts*Popcorn*Pitch Forks Quality little gadgets Rawhides for man's best friend. Seed & Suet*Saddle soap*Special Orders*Saws*Shovels Tins*T-Shirts*Tarps*Tools Useful and Unique gifts Visit us 8:30-5:30 M-F, till 3 Saturday Waterers for all the livestock, Wire X-mas Decorated Tins—fill 'em with seed, treats, popcorn Yeast, Hoppa, Malt & Brewer's Sugar for Brewing Zimecterin for horses and a whole lot more!</p>
---	---

or, let 'em decide for themselves...
Give a Gift Certificate!

Since 1930

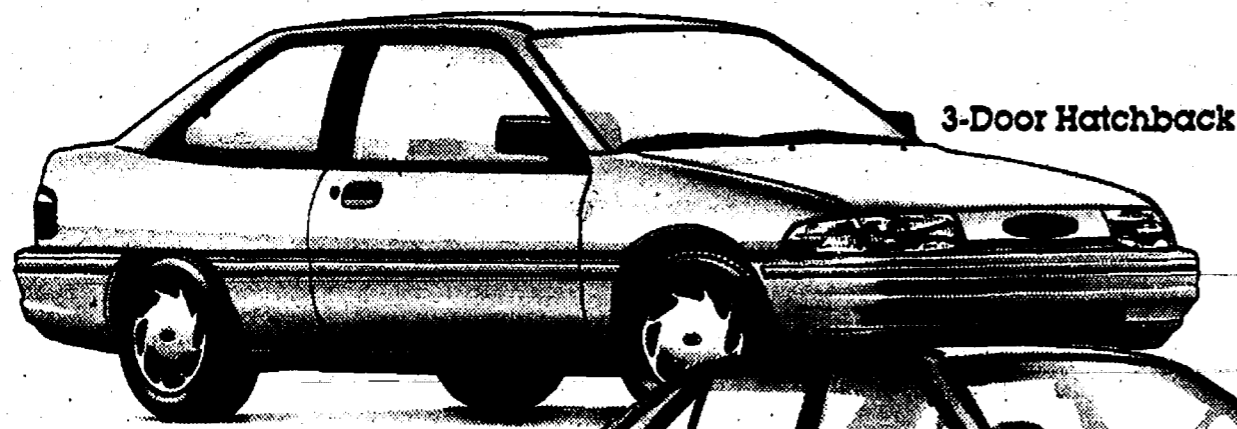
HERE ARE YOUR CHOICES... FOR THE SAME LOW PRICE!

America's Best-Selling Small Cars!

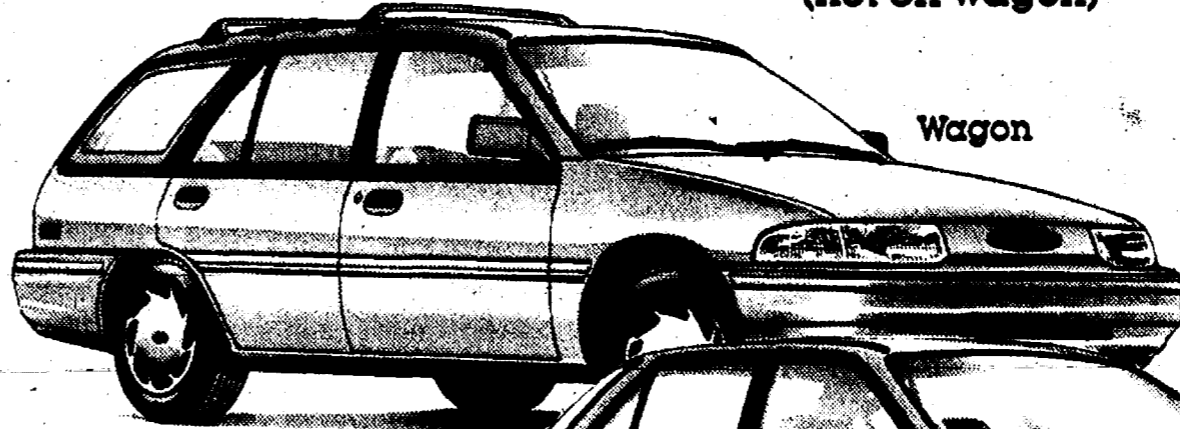
**THE 1993 FORD ESCORT LX
3-DOOR, 4-DOOR, 5-DOOR & WAGON**

ALL EQUIPPED WITH:

- Air Conditioning
- Power Steering
- Rear Window Defroster
- Light Group
- Removable Cupholder Tray
- Dual Electric Remote Control Mirrors
- Remote Fuel Door Release
- AM/FM Radio
- Clearcoat Paint
- Luggage Rack (wagon only)
- Rear Window Washer/Wiper (wagon only)
- Decklid Release (not on wagon)



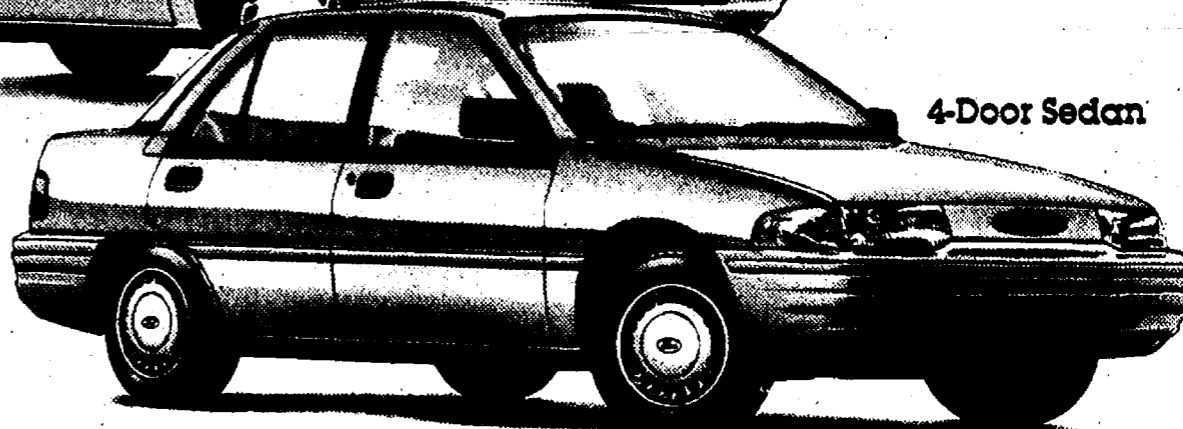
3-Door Hatchback



Wagon



5-Door Hatchback



4-Door Sedan



Now, make your choice, for the same LOW PRICE, at your Suburban Detroit Ford Dealers

*Based on 1992 CY Manufacturers' Reported Retail Deliveries by Segment.
*39 miles to the gallon EPA estimated highway on 3- and 4-Door models.

WASHTENAW COUNTY'S Quality DEALER

Chelsea **PALMER MOTOR** 222 S. Main / 475-1301





CHELSEA COMMUNITY FAIR QUEEN Betsy Soroosh of Dexter was on hand to greet Santa Claus last Friday night at the annual Festival of Lights in downtown Chelsea. Eric Mathis, 5, son of Dave and Diane Mathis of Gregory, didn't quite know what to make of the situation.

Farm Bureau Leader Notes Keys to Meeting World's Food Needs

America must unchain its agricultural productivity to meet the significant food demands facing the world in the next century, according to Jack Laurie, president of the Michigan Farm Bureau. In his annual address to members at the organization's 73rd annual meeting, the Tuscola county farmer told the nearly 700 farmers in attendance that "the agricultural industry can't afford to be a bound giant" that is limited by environmental constraints and lack of profits.

"There is a tremendous challenge ahead of us in agriculture," Laurie said. "Demand for food is going to continue to rise in tandem with world population increases and greater affluence in the formerly impoverished nations of Eastern Europe. By the year 2020, I believe farmers will have to more than double the production of food in order to feed more people demanding better nutrition than ever before."

But the Farm Bureau president said there are significant "chains" that have to be overcome if farmers are to successfully meet the challenge of boosting output. Those "chains" include environmental and land use limitations and the challenge of farming profitably.

"Environmental and land use constraints will make it more difficult to improve productivity in the future simply by adding inputs or putting more land into production. We are going to have to work smarter, not just harder, in order to be productive and 'environmentally correct' in a complex world. One of the ways we can do this is by applying the fruits of biotechnology and expanding our knowledge instead of cultivated land. The successful, profitable and environmentally-friendly farm operation of the 21st century is going to be knowledge and management intensive," Laurie said.

He noted that a knowledge-intensive agriculture needs a strong extension and research system, and he called upon the Michigan State University Board of Trustees to hire a new president who vigorously supports the land grant philosophy. "MSU needs to continue to be a land grant leader in the future so that farmers, and all Michigan citizens, will be able to cope with an increasingly interrelated and competitive world economy," he said.

A factor vital to permitting farmers to boost the profit potential of agriculture, said Laurie, is having the proper fiscal and monetary policy from the federal government, to enhance economic growth. Crucial to that policy is gaining control of government expenditures. "I'm concerned that there was a lot of talk during Gov. Clinton's campaign about increasing taxes and expanding regulations. That's not the way to produce a growing economy. Likewise, despite Gov. Clinton's campaign image as a 'new' Democrat, he will come into office owing a lot of favors to traditional Democratic constituencies. His goal of controlling expenditures and the deficit undoubtedly will collide with the liberal social programs devised by

Congress. Does he have the backbone to stand up to the demands of big-spending congressmen?" asked Laurie.

PARISHO & COMPANY

Professional Corporation
JAMES (JAY) W. PARISHO, C.P.A.
 CERTIFIED PUBLIC ACCOUNTANT
 Two locations to serve you:
 1905 Pauline Boulevard, Suite 5 Ann Arbor, Michigan 48103-5001 313/995/5656
 107 1/2 South Main, P.O. Box 251 Chelsea, Michigan 48118 313/475-9840
 WE SERVICE: Personal — Corporate — Partnership — Farms
 ACCOUNTING — TAX PREPARATION & CONSULTING — FINANCIAL PLANNING
 Appointments available Monday through Saturday

POINSETTIAS

RED - PINK - WHITE

Quantity Discounts **\$250** and up
 10 or more 4" poinsettias \$1.99 ea.



EVERGREEN WREATHS, BLANKETS ROPING MADE FRESH DAILY

Large BLANKETS With Red Ruscus, Cones and Ribbons **\$30** and up
Small BLANKETS with Red Ruscus, Cones and Ribbons **\$20** and up

EVERGREEN CEDAR and PINE ROPING, 50 ft. coil..... \$25



WREATHS

WIDE VARIETY



2 ft. Untrimmed... \$6 2 ft. Trimmed... \$10
 3 ft. Untrimmed... \$15 3 ft. Trimmed... \$20
 4 ft. Untrimmed... \$25 4 ft. Trimmed... \$30

LARGE VARIETY OF FRESH EVERGREEN DOOR SWAGS \$15.00 & up

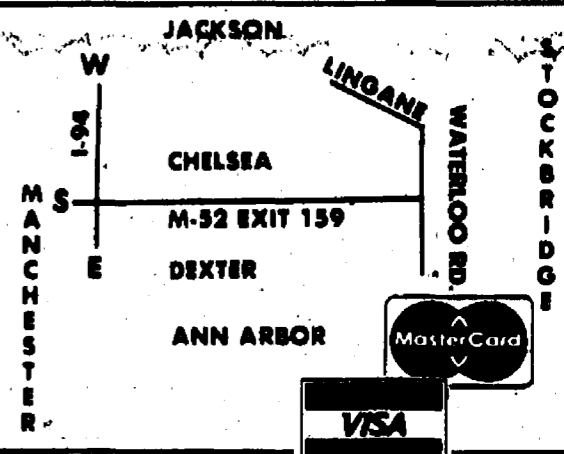
FRESH XMAS GREENS & CANDLE ARRANGEMENTS \$12.50 & up

Open Monday thru Saturday, 8 a.m. to 5 p.m. Sunday (until xmas) 12 to 5 p.m.

BLOOMING PLANTS - TERRARIUMS - BALLOONS - PLANTERS & GREEN PLANTS ALSO, A WIDE VARIETY OF CUT FLOWERS

CHELSEA GREENHOUSE

PHONE 475-1353
 7010 LINGANE RD. CHELSEA
 Charter Member F.T.D.
 Member Teleflora



Gallery Quality FRAMING

Now at

20% off

For many years, the Dale Fisher Gallery has framed its own photographic art exclusively. Now you can have the same high-quality finish for your family photographs, needlework and all types of artwork—and save 20% off until December 15! Stop in today and let us help you make this year's holiday gifts extra special!

Eagle Frame Shop Dale Fisher Gallery

1916 Norvill Rd., Grass Lake (517) 522-4665
 HOURS: Tues.-Fri., 10-6. Sat., noon-5.

Come Give Our Wheels a RIDE We Sell Our Cars with PRIDE!!

GM AUCTION CARS

1992 BUICK CENTURY 4-dr. 13,000 miles.....\$12,500	1992 BUICK LeSABRE 4-dr. 6,200 miles.....\$17,900
1992 GEO STORM HATCHBACK 12,300 miles.....\$12,500	1992 OLDS DELTA ROYAL 11,200 miles.....\$16,900
1992 CHEV. LUMINA 4-dr. 11,000 miles.....\$12,900	1992 OLDS DELTA 88 L.S. 12,300 miles.....\$17,900
1992 BUICK SKYLARK 4-dr. 6,300 miles.....\$13,900*	1992 CHEV. BERETTA GT 8,600 miles.....\$12,900
1992 OLDS TORONADO 9,900 miles.....\$19,900	

QUALITY USED CARS & TRUCKS

1993 CHEV S-10 PICK-UP 200 miles.....\$10,900	1988 BUICK CENTURY 4-dr. Station Wagon.....\$6,995
1992 OLDS 98 TOURING SEDAN.....\$17,900	1988 BUICK LeSABRE 4-dr. Limited.....\$7,995
1992 BUICK LeSABRE Limited. 1,500 miles.....\$19,900	1988 CHEV. CAPRICE 4-dr.....\$4,995
1991 CHEV CAVALIER 4-dr. 26,000 miles.....\$7,495	1988 CHEVY CAPRICE 4-dr.....\$6,995
1991 CHEV BLAZER Loaded.....\$6,995	1988 CHEV CELEBRITY 4-dr. Was \$4,995.....\$3,995
1990 OLDS CALAIS 4-dr.....\$6,995	1988 CHEV CAVALIER.....\$5,295
1990 CHEV LUMINA 4-dr.....\$6,995	1987 CHEV CAVALIER R.S. 2-dr. Was \$4,995.....\$3,495
1990 CHEV 3/4-TON PICK UP.....\$9,995	1986 PONTIAC 6000 4-dr.....\$2,995
1989 CUTLASS SUPREME 2-dr. Int. Series.....\$9,495	1986 OLDS CALAIS 2-dr.....\$2,495
1989 BUICK LIMITED 4-dr.....\$9,495	1986 CHEV NOVA 4-dr.....\$2,995
1989 DODGE DAYTONA 2-dr.....\$6,995	1986 PONTIAC 6000 STE 4-dr.....\$5,495
1989 S-10 BLAZER TAHOE.....\$11,900	1986 OLDS TORONADO 2-dr.....\$5,995
1988 GMC SAFARI VAN.....\$7,995	1986 BUICK SKYLARK SOMERSET.....\$4,995

CALL Dave, John, or Fred

FAIST-MORROW

"Where the Quality Used Cars Are Found"

1500 S. Main St. Chelsea
475-8663
 OPEN TILL 8:00 p.m.
 MON & THURS
 OPEN SAT 9-3

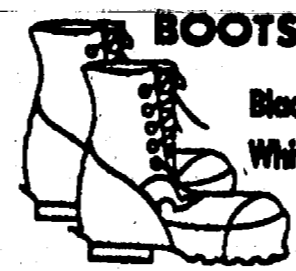
FOR SOMEONE SPECIAL

KNIVES and WATCHES
SWISS ARMY
 GRANDSETO
15% OFF

WINTER COATS
20% OFF



MICKEY MOUSE BOOTS w/valve
 Black \$69.98
 White \$89.98
 2 Year Warranty



Duofold
 PERFORMANCE IN ACTION

20% OFF!



MINNETONKA MOCCASINS • CLOSE-OUTS

COME IN...
 We're YOUR
 Santa Connection
DJ'S ARMY SURPLUS

— GRASS LAKE —

SWEATERS 20% OFF



SLEEPING BAGS 20% OFF



517 522-8219 113 E. Michigan Ave.
 1-800 937-3404 Grass Lake

CHECKS WELCOME
 60-DAY LAY-AWAY

HOURS: Mon., Wed. & Sat., 9-6. Thurs. & Fri., 9-8. Sun., 11-5

HIGH BLOOD PRESSURE IS A SILENT KILLER



...IT CAN LEAD TO HEART ATTACK, STROKE AND KIDNEY FAILURE. FINDING OUT YOU HAVE IT CAN SAVE YOUR LIFE.

For more information call 800-482-1455

THE WORK OF THE NATIONAL HEART, LUNG, AND BLOOD INSTITUTE IS FUNDED ENTIRELY BY PUBLIC CONTRIBUTIONS

Local Teachers Named To 'Who's Who Among America's Teachers'

Several teachers in Dexter, Chelsea, Grass Lake, Manchester and Pinckney high schools were named to the second edition of "Who's Who Among America's Teachers."

Students listed in "Who's Who Among America High School Students" and "The National Dean's List" selected the honored teachers.

In Dexter, Valorie Berryman, David Dirlam and James Hollister, all Wylie Middle school teachers were selected.

In Chelsea, Michael Bohlender, Paul Terpstra and Cathy Visek of Chelsea High school; Susan Craig of Beach Middle school; Suzanne DeVries of North Elementary school; and Theresa Curtis of Chelsea schools were selected.

In Grass Lake, Bradford Tompkins and Clifford Whitenburg of N. Sharon Christian school were selected.

In Manchester, Yvonne Henry of Klager Elementary school was selected.

In Pinckney, Jeffrey Brown of Pinckney High school; Donald Graham of Pinckney Elementary school, Kathlenn Haskins of Pinckney Middle School; and Eric Ray of Pinckney Community schools were selected.

Paul Krouse, publisher of the List, said "There is no greater honor teachers can receive than to be recognized by former students for their excellence and dedication. In this publication we clearly have the best teachers in America selected by the best students."

The students nominated teachers who made a difference in their lives by helping to shape values, inspire interests in a particular subject or challenged them to strive for excellence.

Where do adolescents get information about nutrition? A recent survey found that 95 percent of the young people get the information from their school. But only 58 percent say the information is very useful.

The Chelsea Standard

Section 2

Chelsea, Michigan, Wednesday, December 9, 1992

Pages 9-20



NON-EMERGENCY TRANSPORTATION SERVICES, a new company started by two former Chelsea Milling Co. employees, has opened in Jackson. The company specializes in transportation for people with specialized needs, including the handicapped and disabled. Their custom van meets all specifications of the Americans With Disabilities Act, the owners say. From left are Jerry Pacholek, Scott Barnett, and Julie Barnett.

Business Addresses Transportation Needs of Handicapped, Disabled

A new transportation company aimed at handicapped people and others with special needs has opened in Jackson.

Scott and Julie Barnett, former long-time employees of the Chelsea Milling Co., and Julie's brother, Jerry Pacholek, have started Non-Emergency Transportation Services of Michigan, Inc. (NETS).

The trio has customized a Ford van to meet all requirements of the new Americans With Disabilities Act, which means it has an approved wheelchair lift and all required restraints.

In addition, the van is capable of carrying a stretcher as the service is described as a "low-cost alternative

to an ambulance for non-emergency transportation."

"We've heard stories about people who needed to go to the hospital in Ann Arbor then got stuck with a huge bill because they didn't have any choice but to use an ambulance," Julie said.

"With an ambulance, you pay for two paramedics and a lot of specialized equipment you won't use."

The van is also equipped with a number of creature comforts, including television sets and a stereo system. It even has a hook-up for video games. The idea is also to provide a way for handicapped people to travel in comfort, whether to a

hospital, doctor's appointment, or a movie theater.

Pacholek brought the idea for the business from his previous home in Ft. Myers, Fla., which has a large senior citizen population. Florida, in general, has many similar businesses, but Pacholek wanted to improve on them. That's why the van was modified to have plenty of head room, among other changes.

NETS charges \$1.10 per mile plus a departure fee. They will travel any distance and will wait during appointments and other stops. A second van is on order. The owners eventually hope to have an entire fleet.

For more information call (517) 784-5180.

HARPER SHOE (& Apparel) CO.

"We're not just a shoe store anymore"

D. Harper—Owner



- *Bulldog Apparel
- *U.of.M. Hats & Apparel (20%) off
- *Sport Caps (20% off)
- *Sweat pants (20% off)
- *Customized Apparel & team uniforms
- *Personalized Service
- *FREE gift wrapping

Open Sundays • SHOP DOWNTOWN • Open Evenings
475-2311

Christmas Open House

at
THE COUNTRY ROSE

and **ALLIE'S CAFE**

A quaint place to meet friends and make new ones!



celebrate the holiday season

Friday, Dec. 11th

★ Store-wide Savings

★ Refreshments

★ Holiday Music with Chelsea's own **Jeremy Guenther**

Come join us . . . we look forward to personally thanking all of you and wishing you a happy holiday season.

Mary & Ann

OPEN: Mon.-Wed. 8-6, Thurs.-Sat. 8-10, Sun. 10 to 6.
112 E. Middle St., Chelsea

475-8188

CAP Searching for Past Members

By Kathy Finger

A new theatre season is getting under way for the Chelsea Area Players, a local non-profit community theatre group. The first production of 1993 will be a 20th Anniversary "RE-CAP" of the 23 musical productions which CAP has brought to Chelsea and the surrounding communities over the years. This production is scheduled for March 11-12-13.

Efforts to reach and retrieve as many past members, cast and crew to return and work with us on this production is well under way, but help is still needed. If family or friends know the whereabouts of the following people, please drop us a note or get in touch with them and have them drop us a note. We really want to hear from them before January: Howard Salyer (Oklahoma, Hello Dolly, Good Man Charlie Brown), Mary Ann Nemeth (Hello Dolly, Mame), Doug Foreman (Bells are Ringing), Tom Schill (Fantastics), Keith Pfeifle (Fantastics, Music Man, Good Man Charlie Brown), David Andrews (Camelot), Susan Filipiak (42nd Street), Chris Alber (Music Man, Sound of Music, Hello Dolly, Fantastics), Kathy

Schneider (The King & I), Lori VanRiper (Bells are Ringing), and Robert Mulvihill (Music Man).

We would also like to reach the members of the original quartet from "You're a Good Man Charlie Brown," but we have been unable to locate a program in order to identify all of these people. If you have a program we could borrow to copy please let us know!

In addition, we are still looking for a few people to volunteer their time to help choreograph one or more numbers from the show. If you have interest in working in this area and have a little bit (or a lot) of time you'd like to give, please contact one of our producers: Shelly Wheaton, 475-9767, or Cindy Gaken, 475-2898.

The songs which will comprise the retrospective through the many CAP musicals have been chosen and will be presented in a Broadway type review for your entertainment. You will hear such favorites as "With a Little Bit of Luck" from "My Fair Lady," "Getting To Know You" from "The King and I," "Tradition" from "Fiddler on the Roof," "If They Could See Me Now" from Sweet Charity, "Tomor-

row" from "Annie," "Nothing Like a Dame" from "South Pacific," and "So Long, Farewell" from "The Sound of Music," just to name a few.

The show is being directed by Jan Koengeter, and the cast is expected to be very large, including an ensemble of many children. If you would like to try out for this event, auditions are scheduled for Jan. 23 and 24 at Beach Middle school. If you would prefer to donate your time to helping out behind the scenes, drop us a note and let us know where your interests are and how much time you'd like to share with us. Even an hour or part of a single day will help CAP build a wonderful community production we can all be proud of.

At this time of year we'd like to remind you that we are a small non-profit organization who functions primarily upon the generous donations from our community and annual membership fees. We hope you will remember us with a tax deductible gift in 1992, to support our upcoming season which consists of the RE-CAP Production in March, Theatre Workshop in June, a High School Scholarship in June, and Gypsy in July 1993.

CAVANAUGH LAKE STORE

"Your Neighborhood Market"

Win, Win, Win!
XMAS ANIMATED DOLL

Drawings to be held Dec. 17th & 31st
\$5.00 Grocery Purchase Qualifies for Entry
(Cigs., Liquor, Beer, Wine not included)

COKE & PEPSI 12 pks. **\$3.99** plus deposit
OPEN 7 DAYS 8:00 A.M. - 8:00 P.M. 475-2731



SPORTS

Let's Go
Bulldogs!



Deep Wrestling Team Could Challenge for League Championship

It could be kind of a confusing year for the way coach Kerry Kargel described the prospects for his Chelsea Bulldogs wrestling team this season.

Confusing because the coach may not have the same line-up twice this season. He has more than one experienced, quality wrestler in virtually all 13 weight classes, and no clear-cut favorite in several.

"The strength of our team should be our depth," Kargel said.

"Many of our matches are going to be close in the wrestle-offs and that's good. Everybody has someone to challenge him and they'll have to stay on their toes."

However, for the first time in many years, it's going to be tough for a freshman to crack the starting line-up. That's partly due to the quality of the returning wrestlers. But it's also due to the fact that more than one-third of the freshmen check in at more than 185 pounds. Usually, stronger, more experienced wrestlers dominate the upper weights.

Last year's Most Improved wrestler, senior Kevin McCalla, is the captain of this year's team and a likely starter at 152. He was a regional qualifier last year and Kargel will look to him to be one of the team's consistent scorers.

Junior Tim Wescott, at 119, and senior Ian Dyer at 145 should also provide plenty of scoring for the Bulldogs. Kargel said those two, along with McCalla, are the strongest and most skilled wrestlers on the team.

Kargel will also depend on senior Todd Watson at 125, the guy he calls "the sleeper on the team."

"I saw a lot of good things from him at the end of last season and he nearly beat a state qualifier," Kargel said.

Challengers at the other weight classes include junior Dan Alber and freshman Ray Hatch at 103; sophomore Ryan Ludwig and Alber at 119; Wescott and sophomores Matt DeLong and Eric Montange at 119; sophomore Ben O'Connor at 130; sophomore Ryan Wagner and freshman Mike Thayer at 135; seniors John Heller and Andrew Parker, and sophomore Mike Bainton at 140; Dyer and senior Casey Schiller at 145; McCalla and junior John Bobo at 152; juniors Paul Taylor and Eric Dougherty at 160; senior Jason Szostak, freshman Jordan Dyer and junior transfer Jim Branham (Ann Arbor Pioneer) at 170; junior Chris Kargel and freshman Sam Morseau at 189; and senior Rob Bergman, sophomore Dan Watson, and freshman Tom Barkman at heavy weight.

Other kids on the team include seniors Alex Roskowski, Nick Schumann, and Bruce Goodwin, juniors K. Harr, Brad Martell, and Reese Cobell, sophomores Dan Koengeter,

Jason Risner, Mike Lucas, Mike Peterson, Eric Bergman, Kevin Hafner, Gary Klink, and Mark Sparaco, and freshmen Eric McCalla, Zac Eresten, Jeremy Feldkamp, Jorge Rosario, Ryan Lafferty, and Aaron Grammatico.

Kargel has 48 kids out this season, an usually high number. By mid-season he expects 35 will still be wrestling. He generally considers 28 kids to be a big team.

The Southeastern Conference

should be strong this year, Kargel said, with the Pinckney Pirates as the pre-season favorite.

"They have almost all seniors in their line-up," he said.

Kargel expects that Chelsea, Saline and Dexter will also push the Pirates. "I think everyone in the league is going to take a loss," Kargel said.

"The championship will probably come down to the league meet."

The Bulldogs open their season this Saturday at the Haslett Invitational.



ROGER COX, assistant football coach at Chelsea High school for the last three years, has been named one of four Assistant Coaches of the Year by the Michigan High School Football Coaches Association. Cox, a teacher at Beach Middle school, came to Chelsea from Lincoln High school, where he had been head coach for nearly a decade. Cox is the team's defensive co-ordinator. "A lot of the time assistant coaches do a tremendous amount of work and get little recognition for it," said Chelsea athletic director Wayne Welton. "This is a nice honor for Roger."

If it seemed like you ate a lot of holiday turkey, you probably did. Per capita consumption of turkey is 18 pounds a person, compared to only eight pounds a person in 1970.



SENIORS on the 48-student Chelsea High school wrestling team will have a lot to say about the team's success this season. In front, from left, are Rob Bergman, Andrew Parker, Nick Schumann, and captain Kevin McCalla. Standing, from left, are John Heller, Todd Watson, Alex Roskowski, Casey Schiller, Ian Dyer, and Bruce Goodwin.

8th Grade Cagers Lose to Lincoln

Beach Middle school eighth grade basketball team lost to the Lincoln Railsplitters last week, 40-31.

Chelsea was down 17-16 at half-time but was outscored 14-8 in the third quarter.

"We're starting to score more points but are still not getting enough shots at the basket," said Chelsea coach Jim Tallman.

"With the height advantage most teams hold over us, we usually get out-rebounded. However, great hustle and aggressiveness on defense kept us in this ballgame until the fourth quarter when Lincoln's height advantage allowed them to keep us from getting a second or third shot at the basket."

Tallman said that Jason Sprawka turned in another fine performance both offensively and on the boards and Tim Lawrence, Justin Strong, and Casey Wescott played well defensively.

"Brian Bloomensaat, Jake Walker, Casey Wescott, and Lance Ching have all showed improvement in their defensive skills," Tallman said.

Chelsea scorers included Sprawka 8, Jake Walker 4, Justin Strong 4, Lawrence 4, Paul Bragalone 4, Jeff Hughes 2, Dusty White 2, Wescott 2, Jeremy Peace 2, and Josh Fraker 1.

7th Grade Cagers Lose to 'Splitters

Beach Middle school seventh grade basketball team lost to the Lincoln Railsplitters last week, 45-35.

"We finally played a decent first half but then got out-played the second half, especially defensively," said Chelsea coach Jon Schaffner.

Chelsea statistics are as follows. Points: Don Reilly 13, Justin Kivi 12, Tom Holdsworth 4, Adam Morse 2, Matt Adams 2, Nathan Menge 2.

Rebounds: Adams 8, Reilly 6, Joe Barkman 6, Kivi 3. Assists: Kivi 5.

Convenient Weekly Delivery

in each Wednesday's mail

for less than 29¢

each week

The Chelsea Standard

CUSTOM COVERS
Prepare your boat for winter with a new mooning cover

617 S. Ashley, Ann Arbor • (313) 665-9126

SUBWAY

WE'LL GO TO GREAT LENGTHS FOR YOUR HOLIDAY PARTIES

HOLIDAY TIME IS "PARTY SUB" TIME AT SUBWAY. Just give us a call . . . we'll do all the work so you can enjoy the party.

DECEMBER SPECIAL
12" Roast Beef Sub, bag of chips & medium drink only \$4.99
6" Meat Ball Sub bag of chips & small drink only \$2.99

Special offers good at Chelsea Subway only; not valid with any other offer. DECEMBER ONLY

SUBWAY of CHELSEA
Gift Certificates to satisfy all Your Holiday Needs!!

475-SUBS In the Village Mall - near Polly's
1107 S. MAIN ST., CHELSEA

GOLF SALE
DEC. 19 & 20 - 10 a.m. to 5 p.m.
20% to 50% OFF

- ★ Golf Gloves
- ★ Golf Bags
- ★ Putters
- ★ Metal Woods
- Golf Balls
- Golf Shoes
- U-M Jackets & Sweat Shirts

All make great stocking stuffers

GIFT CERTIFICATES AVAILABLE FOR LESSONS OR MERCHANDISE
Ask about our Driving Range and Golf Membership for 1993

Merry Christmas
Special thanks to all our friends for their support this past year.

WATERLOO GOLF COURSE
11800 TRIST RD., GRASS LAKE PH. 1-517-522-8527

JOHN DEERE TOYS

Just Like the Real Thing

Little ones like playing grown-up, and they'll love playing with these die-cast metal John Deere scale models.

John Deere toys... just right for younger hands.

Nothing Runs Like a Deere

Put a John Deere Under Your Tree

BOULLION SALES
8530 N. Territorial Rd., Dexter, Mich. (313) 426-8527
(Between Dexter and Pinckney, 1 mile east of Dexter-Pinckney Rd.)

BOWLING



Chelsea Suburban League

Standings as of Dec. 2

W	L
McCalla Foods	62 36
Great Lakes Bancorp.	61 37
D&E Enterprises	60 38
3-D	59 39
Lewis Masonry	57 41
Starlight Acres	48 50
M&D Productions	47 51
Flow Easy	46 52
K&S Builders	45 53
The Stage Shop	43 55
Chelsea Pharmacy	37 61
Chelsea Lanes	33 65

Games of 155 and over: D. McCalla, 156, 168, 169; D. Schulz, 177; E. Schulz, 181; C. Schulz, 180; D. Hollister, 180; B. Krichbaum, 180; B. Moore, 180; I. Fouty, 170, 187; B. Hudson, 186, 174; P. Haroon, 188; Rankin, 183; S. Lawin, 184, 171; A. Grau, 200; P. Stewart, 189; S. Winkie, 186, 178; M. Paul, 184, 158; E. Pastor, 187, 181, 183; S. Jackson, 181, 201; C. Miller, 188; E. Layher, 186; M. Lardner, 184; K. Bauer, 188; K. Powers, 174; J. Guenther, 188, 190, 170; W. Gerstler, 197, 188; G. Williamson, 186; J. Shepherd, 178; D. Peck, 177, 183.

Series of 465 and over: D. McCalla, 465; B. Moore, 481; I. Fouty, 474; B. Hudson, 472; A. Grau, 510; M. Paul, 477; E. Pastor, 501; S. Jackson, 522; K. Bauer, 477; J. Guenther, 527; W. Gerstler, 497; D. Peck, 491; J. Shepherd, 489.

Senior Fun Time

Standings as of Dec. 2

W	L
Happy Three	59 32
Go Getters	58 33
Pals	56 35
Strikers	53 38
Gutter Dusters	51 40
Triple Action	50 41
Green Ones	49 42
Spliters	49 42
Spitters	47 44
Rejects	45 46
Goodtimers	45 46
Happy Bowlers	43 48
Steadies	40 51
Curry's & Bill	38 53
Three Cookies	36 55
Jolly Trio	32 59
Ten Pins	28 63

Men, high series: J. Richmond, 531; C. Myers, 510; P. McCarthy, 489.

Men, high games: C. Myers, 169, 174, 167; G. Beeman, 186, 178; J. Mayr, 189, 182, 147; W. Gochanour, 187, 187; S. Worden, 149; P. McCarthy, 183, 148, 178; S. White, 183; E. Nicholas, 178; A. Wahr, 145; J. Stoffer, 148, 148; J. Richmond, 173, 233; L. Joos, 177, 148; N. Bot, 187; H. Huttenlocher, 148.

Women, high series: C. Brooks, 489; M. Uremmyer, 468; M. McGuire, 450.

Women, high games: C. Brooks, 155, 176, 178; M. McGuire, 145, 149, 136; D. Richmond, 183, 133; J. Buckingham, 160, 132; M.R. Cook, 147; E. Curry, 146; A. Gochanour, 146; L. Parsons, 138, 143; V. May, 147; A. Hoover, 146, 145; P. Allen, 133; M. Nussanmayr, 187, 137, 172; N. Rete, 131; G. Puckett, 141; D. Lukenich, 132, 156; J. Gauss, 167; M. McCarthy, 145, 156; M. Richardson, 182, 143, 130.

Spills made: M.R. Cook, 5-6; B. Balliet, 4-5; E. Curry, 5-8; D. Richmond, 4-7-8; M. McGuire, 3-10; J. Stoffer, 6-10-4-7; C. Myers, 6-7; P. Noworyta, 5-7.

Chelsea Bantams League

Standings as of Dec. 5

W	L
The Bush Wackers	59 32
Strikers	58 33
The Trolls	51 40
Gunnels	49 42

Male, games over 50: S. Schanz, 88; E. Stanley, 88; R. Kaiser, 79; R. Castleberry, 74; S. Sweet, 86; D. Armbruster, 87.

Male, series over 100: S. Schanz, 150; E. Stanley, 147; R. Kaiser, 149; S. Sweet, 132; R. Castleberry, 128; D. Armbruster, 108.

Female, games over 50: H. Pichea, 82.

Female, series over 100: H. Pichea, 149.

Male star of the week: S. Schanz, 88 pins over average for series.

Female star of the week: H. Pichea, 87 pins over average for series.

Chelsea Realty League

Standings as of Dec. 2

W	L
Team Pending	58 40
Vacant Lot	54 44
K. of C. Land Lovers	50 48
All Most	47 51
Quit Claim	46 52
Access	45 53

150 games and over: I. Nickala, 183; L. Collins, 177, 150; D. Stetson, 188, 184; C. Bogdanaki, 155, 188; D. Noye, 158; R. Hummel, 191; S. Perry, 158; M. Ralita, 174; D. Martel, 184, 186; B. Pheipha, 185; S. Helm, 174; V. Rudd, 158; D. Fischer, 158; S. Bainton, 158, 160, 157; K. Greenleaf, 151, 154; S. Steele, 170.

450 series and over: L. Collins, 478; D. Stetson, 499; R. Hummel, 462; S. Bainton, 48 pins over average for series.

Tri-City Mixed League

Standings as of Dec. 4

W	L
Colonial House Salon	75 30
Wolverine	64 41
Thunder Rolls	62 43
Chelsea Lanes	61 44
3-D Sales & Service	59 46
Lucky 13	58 47
Lightning Strikes	52 53
Kam Kar Kianatics	49 56
Clary's Pub	49 56
Rosenreiter Exc.	48 57
The Rookies	45 60
Alstrom Electric	44 61
The Pin Shop	40 65
Chelsea Telecom	32 73

Women, games 150 and over: M. Alstrom, 169, 181; C. Roberts, 154; D. Roberts, 154; G. Foley, 187; T. Boyer, 184, 152, 158; K. Fletcher, 180, 157; N. Rosenreiter, 167, 158; J. Stanley, 161, 153; C. Stoffer, 176; J. Schulz, 188; M.J. Boyer, 180, 180, 155; F. Zatoraki, 188; N. Cavander, 154, 177, 150; C. Miller, 181, 168; S. Stevens, 158; M. Ridenour, 181; D. Fisher, 158.

Women, series 450 and over: T. Boyer, 474; N. Rosenreiter, 450; M. J. Boyer, 528; N. Cavander, 486.

Men, games 175 and over: J. Ritchie, 185, 178; D. Alstrom, 206, 190; P. Fletcher, 213; R. Stanley, 193; T. Schulz, 204, 182, 198; R. Zatoraki, 205; C. Gibson, 215, 207, 202; S. Cavander, 194, 223, 208; T. LaCroix, 179, 177; C. Ridenour, 187, 180.

Men, series 475 and over: J. Ritchie, 508; D. Alstrom, 548; E. Fuson, 482; L. Roberts, 498; P. Fletcher, 539; G. Boyer, 477; T. Schulz, 584; R. Zatoraki, 500; C. Gibson, 524; S. Cavander, 613; M. Dodes, 483; T. LaCroix, 523; C. Ridenour, 561.

500 series, men: P. Klink, 560; M. Dault, 540; C. Clouse, 500; E. Calkins, 548; M. Waiz, 510; R. Beeman, 503; T. Klobuchar, 553; S. Priebe, 582.

Chelsea Youth Mixed League

Standings as of Dec. 5

W	L
Triple Impact	63 21
Pin Doctors	55 29
The Dead Milkmen	51 33
Wolverines	48 36
3-Stroke	43 41
Super Strikers	38 46
X-Man	33 51
Team No. 1	16 68

Male, games over 120: P. Urbank, 285; A. Sweet, 289; E. Culver, 190; M. Milazzo, 144; R. Chase, 124; K. Weiser, 127; M. Milazzo, 120.

Male, series over 360: P. Urbank, 541; A. Sweet, 411; M. Milazzo, 392; E. Culver, 384.

Female, games over 120: E. Armstrong, 183; S. Steele, 156.

Female, series over 360: E. Armstrong, 418.

Male star of the week: M. Pratt, 81 pins over average for series.

Female star of the week: E. Armstrong, 87 pins over average for series.

Chelsea Lanes Mixed League

Standings as of Dec. 4

W	L
Double Trouble	77 42
Hard Headers	75 44
Killer Bees	67 52
Two of Us	62 57
Two Sweet	61 58
Lima Beans	56 64
Alley Gators	49 71

Women, 426 series and over: J. Schulz, 486; K. Stepp, 517; L. Behnke, 478.

Men, 475 series and over: T. Schulz, 496.

Women, 150 games and over: J. Schulz, 172; K. Stepp, 236, 186; K. Sweet, 197; L. Behnke, 172, 180; F. Zatoraki, 167.

Men, 175 games and over: T. Schulz, 186; L. Sweet, 178.

Leisure Time League

Standings as of Dec. 3

W	L
Miffids	34 17 1/2
Tidy Bowlers	29 23
Who Knows	23 28 1/2
Late Ones	21 31
Sweetrolls	21 31 1/2

400 series: G. Foley, 400; R. Horning, 439; E. Haller, 458; J. Cole, 468; K. Hayward, 446; G. Wheaton, 447; M. Hanna, 468; B. Parish, 440; M.L. Westcott, 468; M.R. Cook, 454; J. Campbell, 448; D. Stetson, 418.

Games 140 and over: G. Foley, 182; R. Horning, 165, 140; E. Haller, 175, 160; J. Cole, 186, 183, 150; K. Hayward, 160, 164; G. Wheaton, 148, 151, 148; M. Hanna, 160, 188; B. Parish, 153, 178; M.L. Westcott, 181, 180, 147; M.R. Cook, 180, 188; J. Campbell, 148, 182, 141; D. Stetson, 181; Julie Kuhl, 160; P. Gauthier, 147.

Nite Owl League

Standings as of Dec. 7

W	L
Chelsea Lanes	49 35
Suno Bowlers	42 42
Chelsea Lions	42 42
Pioneer Seed	41 43
Lynston Substers	27 57

High games: B. Petty, 193; N. Bollinger, 191; G. Lantheir, 198; H. Pearson, 184; T. Pulley, 179.

Ind. high series: B. Petty, 334; H. Pearson, 523; G. Lantheir, 507; N. Bollinger, 500; T. Pulley, 499; L. Depping, 479.

Sunday Nite Come Ons

Standings as of Nov. 29

W	L
Hot-N-Cold	43 12 1/2
Sports Four	36 20
Proctor Racing	32 24
Four W's	31 25
Sixty Niners	28 28
Kam Kar Kianatics	28 28
Whatchamacallits	28 28
Pinheads	28 28
Happy Campers	28 28
The Big Dogs	27 29
Nutsan Honey	26 30
Nic's and Ross's	26 30
Waterloo Aces	26 30
Jam'r	26 31
Bottoms Up	25 31
No Shows	24 32
Party Peddler	19 37
Noids	19 37

100 games, women: B. Ahrens, 190, 185; K. Strock, 184, 159; D. Klink, 181, 173, 155; K. Rosenreiter, 165, 182, 154; P. Vogel, 178, 168; M. Batters, 188, 184, 153; G. Clark, 205, 190, 169; S. Waiz, 181; B. Houk, 181; M. Fishwick, 153; P. Lesser, 154; K. Pouty, 181; K. Beeman, 158; J. Knauf, 168; S. Fletcher, 181; H. Hamilton, 184.

175 games, men: S. Strock, 178; P. Klink, 198, 192; M. Dault, 198; J. Nicola, 177; C. Clouse, 181, 170; B. Calkins, 200, 189; T. Fortner, 178; M. Waiz, 191; M. F. Posty, 184; F. Huston, 181; R. Beeman, 186; T. Klobuchar, 223, 183; W. Weston, 194; T. Torrice, 178; S. Priebe, 213, 206.

450 series, women: B. Ahrens, 487; K. Strock, 468; D. Klink, 509; K. Rosenreiter, 481; P. Vogel, 481; M. Batters, 473; G. Clark, 584; J. Knauf, 450.

500 series, men: P. Klink, 560; M. Dault, 540; C. Clouse, 500; E. Calkins, 548; M. Waiz, 510; R. Beeman, 503; T. Klobuchar, 553; S. Priebe, 582.

Rolling Pin League

Standings as of Dec. 1

W	L
Kitchen Maids	5 17
Pots	34 18
Tea Cups	30 22
Sugar Bows	27 24 1/2
Coffee Cups	24 27 1/2
Happy Cookers	24 27 1/2
Blenders	23 28
Grinders	23 28
Kookie Kutters	16 36

140 games: L. Wacker, 177, 155; P. Paige, 189, 183; K. Strock, 190, 144, 141; M. Tiller, 149; J. Edick, 190, 178, 173; M. Hanna, 171, 142; B. Parish, 148, 145, 148; P. Harrook, 178, 160, 141; J. Staphish, 168, 198; D. Hahner, 180, 138; C. Stoffer, 182, 150; S. Ringe, 183, 170; P. Wurster, 189, 186; T. Keilmann, 181; K. Conley, 186, 145, 145; D. George, 157, 150; D. Stetson, 165, 152, 149.

400 series: L. Wacker, 483; P. Paige, 520; K. Strock, 483; J. Edick, 547; B. Parish, 436; P. Harrook, 478; J. Staphish, 464; C. Hahner, 444; C. Ramsey, 406; G. Clark, 508; C. Stoffer, 448; S. Ringe, 474; P. Wurster, 459; K. Conley, 446; D. George, 447; D. Stetson, 473.

Bumper Bowlers

Results from Dec. 5

High games: S. Boyer, 119.

Mid-Morning Mixed League

Standings as of Dec. 5

W	L
Schana/Smith	56 36
Wolverine	45 47
Hurricanes	45 47
Shockers	44 48
Hicks/Hess	44 48
Rockets	44 48
Seminole	43 49
People	38 54
Gutter Busters	33 61
Good Luck Trolls	33 61

Male, games over 110: M. Vargo, 136; D. Price, 130; T. Norris, 132; J. Stetson, 29; T. Bailey, 128; J. Bacon, 124; J. Schanz, 123; M. Hicks, 123; N. Smith, 122; D. Brown, 115; E. Sayers, 112.

Male, series over 330: M. Vargo, 378; J. Bacon, 361; D. Price, 357; M. Hicks, 341.

Female, games over 110: S. Miller, 139.

Female, series over 330: S. Miller, 403.

Male star of the week: T. Norris, 129 pins over average for series.

Female star of the week: S. Miller, 73 pins over average for series.

Football Fanatics League

Standings as of Dec. 5

W	L
Strocks	46 38
Landlet Mfg.	45 39
Pythons	45 39
Chelsea Lanes	32 52

Male, games over 130: E. GreenLeaf, 233; J. Strock, 277; C. Grossman, 179; R. McDonald, 174; N. Schumann, 172; C. White, 189; E. McCalla, 144.

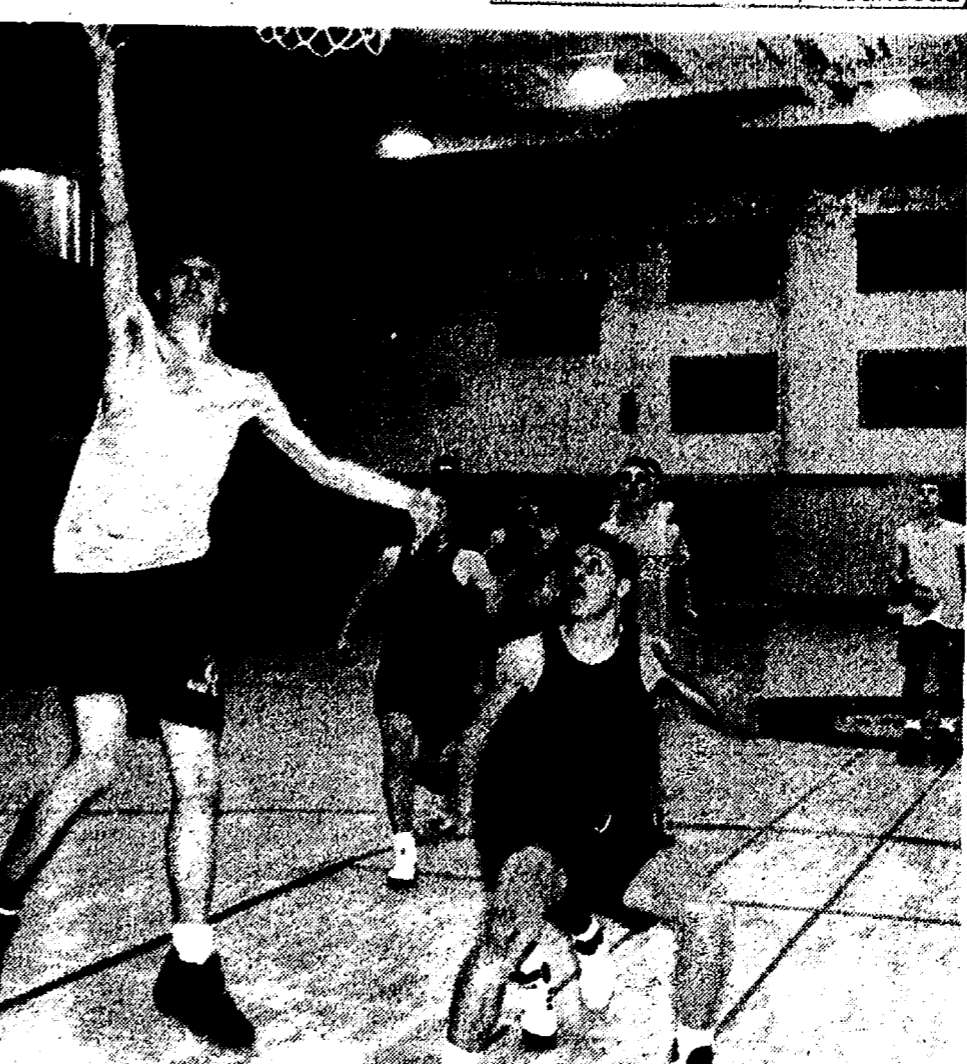
Male, series over 300: E. GreenLeaf, 578; J. Strock, 473; N. Schumann, 468; C. White, 454; C. Grossman, 448; R. McDonald, 438.

Female, games over 130: H. GreenLeaf, 163; M. Strock, 158.

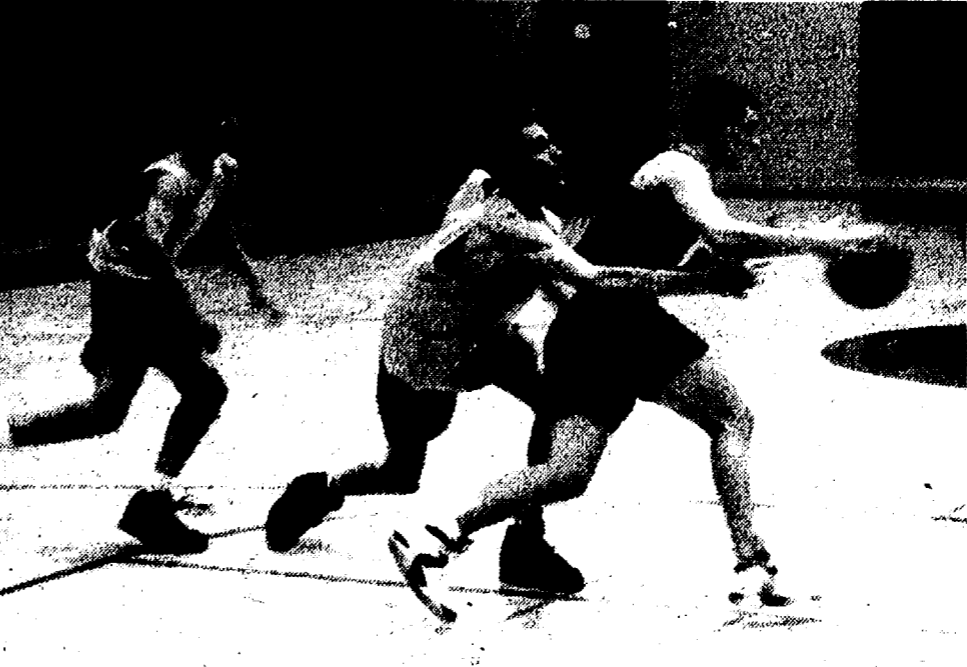
Female, series over 300: H. GreenLeaf, 448; M. Strock, 417.

Male star of the week: C. Grossman, 104 pins over average for series.

Female star of the week: H. GreenLeaf, 61 pins over average for series.



CHELSEA BULLDOGS varsity basketball team played its first game last night at home against Williamston. They travel to Saline this Friday, then to Milan next Tuesday. Above, senior Chris Dunham goes in for an easy lay-up during a scrimmage against Homer last Thursday. Below, Aleksander Seimanovic takes a swipe at the ball while teammate Cory Brown follows.



Thiel, Schmid Are Swim Team MVPs

Senior co-captains Melissa Thiel and Sandy Schmid were named Most Valuable on the Chelsea Bulldogs girls swimming and diving team. The announcement was made at the team's banquet last week at the Chelsea Depot.

Senior Kristi Ostling was named the recipient of the Deanna Zangara Memorial Award.

Most Improved honors went to freshman diver Hillary Kress.

Junior Nona Giebel received the Coach's Award.

Four-year letter awards went to Schmid and Thiel.

Juniors Erica Street and Jennifer Schulz received three-year varsity awards.

Two-year awards went to sophomores Betsy Schunck, Carey

Schiller, and Christie Lonskey.

Ostling, Giebel, and sophomore Angie Wilson received their first-year awards, as did freshmen Erin Baird, Kelly Bowers, Stephanie Wesolowski, Cooper Deerwester, Michelle Dymond, and Erin Armstrong.

Junior varsity letters were given to junior Amy Hinshaw, sophomore Carrie Smith, and freshmen Hillary Smith and Kress.

Standard Want Ads
Get Quick Results!

ALL DRESSED UP AND READY TO GO!

Tis the Season
To Celebrate with
WOLVERINE
FOOD & SPIRITS

You will be delighted with our holiday displays for the family to enjoy.
Open everyday Mon. thru Sat. 9:00 a.m.-2:30 p.m.
Sundays 1:00 p.m.-10:30 p.m.

DAILY LUNCH & DINNER SPECIALS
LUNCHEON SOUP & SANDWICH SPECIAL
FRI. NIGHT SPECIAL BBQ Ribs & BAKED COD
SAT. SPECIAL PRIME RIB

2 lb. SIRLOIN STEAK for hearty appetites or for two.

GRILL OPEN till 7 a.m. Mon. thru Sat.

Fast and Friendly Service

GIFT CERTIFICATES AVAILABLE



Come In To Enter Our Contest:
GUESS HOW MANY CHRISTMAS LIGHTS IN OUR XMAS DECORATIONS

OUR VERY BEST WISHES ARE ON THE WAY.

OPEN BOWLING SCHEDULE

Sunday 11:30 a.m.-5:30 p.m.
(Most lanes open 8 p.m.-11 p.m.)

Monday . . Noon-6:15 p.m. 2 lanes open
(Most lanes open 9 p.m.-11 p.m.)

Tuesday 8:30 a.m.-5:30 p.m.

Wednesday Noon-6:15 p.m.
(Most lanes open 9 p.m.-10:30 p.m.)

Thursday . . Noon-Midnight, 6 lanes open
(Most lanes open 9 p.m.-Midnight)

Friday . . Noon-6:30 p.m., 4 lanes open
(Most lanes open 9 p.m.-11:30 p.m.)

Saturday 8:30 a.m.-11:00 a.m.
(Most lanes open 1 p.m.-Midnight)

KARAOKE

THURSDAY NIGHT, DEC. 10
9 p.m. to 1 p.m.

CHELSEA LANES, INC.

Featuring the Mark IV Bowling
1180 M-52, Chelsea Ph. 475-8141

GUN SHOW

Saturday, Dec. 12
9 a.m. to 5 p.m.

Sunday, Dec. 13
9 a.m. to 4 p.m.

-at-

SALINE FAIRGROUNDS

5055 Saline-Ann Arbor Rd.

For Further Information Call
(313) 779-0171

CHelsea SCHOOL DISTRICT FINANCIAL REPORT
 CHELSEA SCHOOL DISTRICT
 500 E. WASHINGTON STREET
 CHELSEA, MICHIGAN 48118

GENERAL FUND
 COMPARATIVE BALANCE SHEET
 JUNE 30, 1991 AND 1992

	1991	1992
Assets		
Cash on hand and in banks	\$ 307,872	275,059
Investments	4,500,000	2,500,000
Taxes receivable	68,505	44,729
Accounts receivable	35,658	1,650
Accrued interest receivable	22,222	-0-
Inventory	7,416	5,810
Due from other funds	15,518	10,000
Prepaid expenses	11,511	3,985
TOTAL ASSETS	\$4,968,702	2,841,233
Liabilities		
Accounts payable	3,398	-0-
Salaries payable	593,770	638,269
Notes payable	3,825,000	1,450,000
Due other funds	8,288	-0-
Accrued expenses		53,942
TOTAL LIABILITIES	4,430,456	2,142,211
General Fund Equity		
Appropriated		
Reserved	7,416	9,795
Unreserved	530,830	689,227
TOTAL GENERAL FUND EQUITY	538,246	699,022
TOTAL LIABILITIES AND EQUITY	4,968,702	2,841,233

GENERAL FUND
 COMPARATIVE STATEMENT OF REVENUES, EXPENDITURES
 YEARS ENDED JUNE 30, 1991 AND 1992

	Actual Year Ended 6-30-91	Actual Year Ended 6-30-92
Revenue		
Local Revenues:		
Tax levy	9,752,845	10,602,523
Other local revenue	505,684	417,000
TOTAL LOCAL REVENUE	10,258,529	11,019,523
Revenue from state sources:		
State aid	461,173	457,661
Other	20,660	11,442
TOTAL STATE REVENUE	481,833	469,110
Revenue from federal sources		
Incoming transfers	268,165	310,067
	789,645	926,434
TOTAL REVENUE	11,798,172	12,725,134
Expenditures		
Instruction	6,561,614	7,184,063
Support services		
Pupil	654,020	715,283
Instructional staff	464,309	485,898
General administration	182,447	213,274
School administration	536,076	579,865
Business		
Fiscal services	175,189	186,375
Operation and plant	1,572,629	1,396,479
Pupil transportation	651,585	685,767
Other business services	329,934	316,259
Central data	14,988	14,596
Employee benefits		
Community services	120,860	130,457
Capital outlay	314,126	334,681
Transfers - other districts	26,418	80,531
Transfers to other funds	175,033	206,522
TOTAL EXPENDITURES	11,779,228	12,530,050
Excess Revenues (Expenditures)	18,944	195,084

Includes employee benefits per Michigan Department of Education Bulletin 1022

COMPARATIVE STATEMENT OF GENERAL FUND EQUITY
 YEARS ENDED JUNE 30, 1991 AND 1992

	1991	1992
General Fund Equity, beginning of year	\$ 519,302	\$ 503,938*
Excess revenues	18,944	195,084
General Fund Equity, end of year	\$ 538,246	\$ 699,022

* Prior year adjustment (\$34,308)

DEBT RETIREMENT FUNDS
 COMPARATIVE STATEMENT OF REVENUE, EXPENDITURES AND EQUITY
 YEARS ENDED JUNE 30, 1991 AND 1992

	1991	1992
General Fund Equity, beginning of year	\$ 519,302	\$ 503,938*
Excess revenues	18,944	195,084
General Fund Equity, end of year	\$ 538,246	\$ 699,022

* Adjustments of \$1,703.00

County Deputies Report Variety of Local Incidents

Washtenaw County Sheriff's deputies investigated a number of incidents, Nov. 28-Dec. 2, in Dexter, Scio township and Chelsea.

On Nov. 28, an assault and battery was reported in the 19000 block of Waterloo Rd., Lyndon township. A 28-year-old man was attacked by a woman's soon-to-be ex-husband. The man and the woman were in the basement of her home when they heard a vehicle pull in the driveway. A loud bang echoed from the door and the woman's 38-year-old husband entered after kicking the door in. He was yelling obscenities and attacked the younger man, kicking and punching him in the face and ribs. The woman called 911 and informed her husband the police were on their way. The suspect left before deputies arrived.

On Nov. 27, a Varsity Ford employee was arrested after attempting to flee and elude county deputies on Scio Church Rd. The 19-year-old Manchester man was picked-up on radar traveling at 74 mph in his vehicle. A deputy turned on emergency equipment to pull him over, but the man in the Mustang accelerated. After a short pursuit, the deputy felt it was too dangerous to chase him. He also recognized the car and driver from Varsity Ford. The man was later arrested at the dealership.

Damage to property was reported on Joy Rd. near Mast Rd., Dexter. A 35-year-old Dexter woman witnessed a vehicle lose control on a curve, striking two mailboxes and a tree. The driver continued driving away.

On Nov. 28, open intoxication in a motor vehicle was found in a 1985 Ford Mustang driven by an Ypsilanti man on eastbound I-94 near Zeeb Rd., Scio township. Initially the man said he was not the driver of the car. He changed his story three more times before admitting he was the driver. He was arrested and taken to Washtenaw county jail.

A 58-year-old Dexter man reported damage to his mailbox in the 3400 block of Woodlea Rd. near Wagner Rd., Scio township. His mailbox was knocked off its post and stomped on, causing \$150 in damages. A deputy noted it was one among six mailboxes destroyed in the area.

On Nov. 29, a malicious destruction of property was reported in Scio Farms Estates. A Chevy Nova sustained damage to its windshield, totaling \$200. Deputies reported it appeared to be hit with a fist. The incident happened overnight when the victim parked his vehicle in the overflow section of parking in the mobile home park.

A threats complaint was investigated in the 6900 block of Jackson Rd., Scio township. A pop bottle with a cloth type wick device and a paper note taped to it threatened a local distributor. It was found at a party store and confiscated as evidence. Deputies suspect it is related to a labor dispute.

On Nov. 30, a citizen assist was reported in the 8600 block of Jackson Rd., Dexter. A 38-year-old Dexter woman helped deputies discard suspected marijuana down a toilet after she found it in her home. She called the sheriff's department after she found the suspected substance in an empty beer stein. The substance was in a plastic bag. A deputy told the woman that charges could not be pressed because the drugs couldn't be linked to her husband.

A stolen vehicle was recovered in the Bush Rd. area near McClure Rd., Chelsea. A 1991 black Ford Ranger was found after a citizen called in to report a suspicious vehicle on the side of the road. The vehicle was reported

stolen from the Novi area. When Washtenaw county deputies found it the radio was missing and the dash board was damaged.

On Dec. 1, a 28-year-old Ypsilanti man was arrested for operating a motor vehicle under the influence of liquor. Deputies were dispatched to a personal injury accident on Island Lake Rd. near Dexter-Pinckney Rd., Dexter. Witnesses reported the Ypsilanti man swerved his car into a passing lane and ran a stop sign at the intersection of both roads. He continued to enter the intersection, col-

liding with a vehicle heading east-bound on Island Lake Rd. The suspect claimed he had a problem with his brakes and he swerved to avoid hitting the vehicle at the stop sign. The suspect and four others were transported to the hospital for injuries. Beer cans were found in the suspect's vehicle and he agreed to a blood/alcohol test at the hospital.

On Dec. 2, a larceny from an automobile occurred in Scio Farms Estates. A 28-year-old woman reported \$100 in damages to her vehicle and a radio worth \$300 stolen.

Charles E.
Sullivan Plumbing
 Licensed Michigan Master Plumber

- Water Heaters
- Remodeling
- Service & Repair
- New Construction
- Water Softeners
- Sewer Cleaning

475-8114
 Free Estimates

Reasonable Rates

**DRAINS and SEWERS
 CLEANED ELECTRICALLY**

PROMPT SERVICE

FLOOR DRAINS
 MAIN LINES
 STORM SEWERS

**SEPTIC TANKS - Cleaned, Installed, Repaired
 DRAINFIELD & OTHER EXCAVATING**

• RESIDENTIAL • COMMERCIAL • INDUSTRIAL

BOLLINGER SANITATION SERVICE
 PHONE (313) 475-2097

**ONE STOP SHOPPING
 FOR
 ROCK AND MINERAL SAMPLES
 AUDUBON GUIDE BOOKS
 GOLDEN GUIDE BOOKS
 PETERSON GUIDE BOOKS
 WNHA T-SHIRTS
 BOOKS
 Rock Pencils and Jewelry
 Carl Freeman Bookmarks
 and more books**

at the
**WATERLOO NATURAL HISTORY ASSOCIATION
 BOOKSTORE**

In the
GERALD E. EDDY GEOLOGY CENTER
 open 9:00 am to 5: pm, 7 days per week
 phone (313) 475-7130

DEBT RETIREMENT FUNDS
 COMPARATIVE BALANCE SHEET
 JUNE 30, 1991 AND 1992

	1991	1992
Assets:		
Cash in bank	\$48,925	\$153,197
Investments		\$ 202,122
Accrued interest		773
Taxes receivable	675	\$ 1,575
		\$ 2,250
TOTAL ASSETS	\$ 49,600	\$ 204,372
Liabilities & Equity		
Accounts payable	-0-	-0-
Fund equity	\$ 49,600	\$ 154,772
		\$ 204,372
TOTAL LIABILITY & EQUITY	\$ 49,600	\$ 204,372

COMPARATIVE STATEMENT OF LONG-TERM DEBT
 JUNE 30, 1991 AND 1992

	1991	1992
Amount available and to be provided:		
Amount available for debt retirement	\$ 155,764	\$ 204,372
Amount to be provided	3,189,236	2,835,628
Total	\$3,345,000	\$3,040,000
Bonds Payable		
1965 issue	\$ 420,000	\$ 290,000
1974 issue	2,925,000	2,750,000
Total	\$3,345,000	\$3,040,000

Dial-A-Garden Topics Listed

The following is a weekly schedule of Dial-A-Garden, the system of pre-recorded daily gardening tips sponsored by the Washtenaw County Cooperative Extension Service. The system is in operation 24 hours a day, seven days a week. Interested persons are invited to call 971-1129 at their convenience to listen to timely, up-to-date gardening information.

Wednesday, Dec. 9—"Firewood Colors."
Thursday, Dec. 10—"Why Won't Houseplants Flower?"
Friday, Dec. 11—"Caring for Christmas Plants."
Monday, Dec. 14—"Decorate with Backyard Greenery."

Tuesday, Dec. 15—"Making a Grapevine Wreath."
Wednesday, Dec. 16—"Buying a New Houseplant."

An unlikely alliance is blossoming between Colorado farmers and ranchers and New York City, where a firm ships 100 tons of sludge a day from New York's sewage treatment system to be applied to wheat fields and rangeland in southeastern Colorado. The nutrient-rich organic material, which is treated and disinfected for harmful bacteria, is provided free to farmers who use special trucks to haul it from railcars and apply it to their fields.



THE FELDKAMP SISTERS, Sarah Jo, left, and Jodi, right, competed in the 1992 Michigan Make It Yourself With Wool Contest Nov. 14 in Lansing. Sarah Jo constructed a blue tweed jacket and slacks of 100 percent Pendleton wool and placed fourth in the junior division. She is 15 and a sophomore at Manchester High school. Jodi, 12, a seventh grader at Manchester Middle school, made a fully lined Pendleton wool plaid parka and solid, fully lined green split skirt and placed third in the junior division. They are the daughters of Art and Elaine Feldkamp.

Cischke Named Chair Of Hospital Board

Susan M. Cischke, executive engineer of the Chrysler Proving Grounds Operations, was elected to a one-year term as chairman of the Board of Trustees of Chelsea Community Hospital at its November meeting.

Cischke was named executive engineer in February of 1989. In this role with Chrysler, she is responsible for testing, evaluation and assisting in the development of prototype and production vehicles. Her responsibilities also include planning, designing and constructing proving grounds roads and maintaining Chrysler's three test facilities in Arizona and Minnesota, in addition to the main Proving Grounds in Chelsea.

A graduate of Oakland University, Cischke has Master's degrees in both mechanical engineering and professional development in management from the University of Michigan. She joined the Chrysler Corp. in 1976 and prior to her current position was chief engineer of environmental services.

Also elected as officers of the Board of Trustees were C. Wendell Dunbar, senior vice-president, McKinley Associates, vice-president; and Rosanne C. Bloomer, branch manager, Farm Credit Services of Southeastern Michigan, secretary. Re-elected treasurer of the board was John P. Hansen, Ph.D., superintendent of the Dexter Community Schools.



SUSAN M. CISCHKE

Learn To Make Ornaments Using Recycled Materials

"Have a Recycled Christmas!" will be the topic of a program at the Eddy Geology Center this Saturday, Dec. 12 at 1 p.m.

Teacher Mary Lou Bower and staff interpreter Michelle Moffatt will help participants make Christmas ornaments from recycled materials.

Participants should register for the program by tomorrow (Thursday, Dec. 10) by calling the center at 475-3170.

The program is free of charge. However, a state motor vehicle permit is required to enter the park.

Please Notify Us of Any Change in Address

GUITAR LESSONS

Fast Results!

20 years experience; all styles

GUITAR REPAIR

Call 475-2964

Christian D. Smith

Promoted in Air Force

Christian D. Smith has been promoted in the U.S. Air Force to the rank of airman.

Smith, an apprentice imagery production specialist, is the son of Hank and Linda Smith of 13484 North Territorial Rd., Gregory.

His wife, Kimberly, is the daughter of Richard R. Wheeler of 5430 Pineview Dr., Ypsilanti, and Velma Markins of 3836 North Territorial Rd., Whitmore Lake.

The airman is a 1986 graduate of Chelsea High school.

Michigan State University has received a green light to begin building the National Food Safety and Toxicology Center in East Lansing. The center, expected to be finished in 1996, will focus on research and teaching to help the food industry insure the safety of all food products.

Richard D. Kleinschmidt



General Contractor
Roofing - Siding - Carpentry
Seamless Aluminum Gutters

4785 Mast Rd.
Dexter, MI 48130

(313) 426-4613

Your advertising support makes this newspaper possible.

BUSH & HUTCHINSON, P.C.

DEBORAH J. HUTCHINSON, CPA MICHAEL W. BUSH, MBA, CPA
CERTIFIED PUBLIC ACCOUNTANTS

Bookkeeping, Tax Consulting, Payroll
Financial Planning, Business Start-Up
IRS & Treasury Audits & Collections

PERSONAL-BUSINESS-CORPORATE-FARM
CALL ONE OF OUR LOCATIONS

8064 Main St., Dexter Telephone: 426-3045
134 N. Howell St. Pinckney Telephone: 878-2668

THOMAS J. BURKE, D.D.S.

3288 BROAD ST.
DEXTER, MI 48130
426-8292

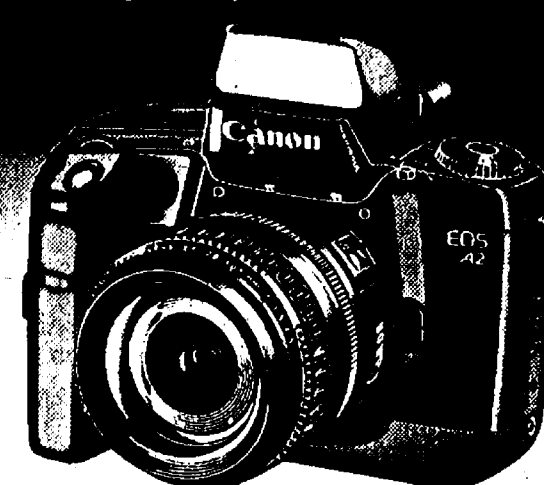
FAMILY DENTISTRY

Within walking distance
from Dexter schools.

Hours By Appointment
NEW PATIENTS WELCOME



Exclusive five-point, wide-zone autofocus.



Canon
EOS
A2
NEW!

- Features live-point autofocus for a wide range of focusing options
- Whisper Drive™ film transport with 5 fps and near silent rewind mode. Built-in autofocus flash with red eye reduction
- Eight automatic exposure modes and metered manual
- Electronic control dials give you fast and easy access to camera functions including three metering systems and sixteen custom functions
- Includes Canon U.S.A. 1-year limited warranty/registration card

Canon Factory Representative
will be in our store all day
SATURDAY, DEC. 12

Come in and see all the new products.

HURON CAMERA & VIDEO

We repair all makes and models of Cameras and Projectors
8060 MAIN ST., DEXTER PH. 426-4634

Just 10 minutes from Ann Arbor, Chelsea or Pinckney
New Extended Hours: Mon.-Tues.-Wed.-Fri., 9-6, Thurs., 9-8, Sat., 9-3.

FARMERS SUPPLY

122 JACKSON STREET, CHELSEA • 313/475-1777
EAST OF MAIN—AT THE RAILROAD. MON.-FRI. 8:30-5:30. SAT. TILL 3

Save your water-softening system
and Save yourself money

MORTON Pellets SYSTEM SAVER

99.5% PURE SALT
CONTINUOUS CLEANSING FORMULA
THAT HELPS...
- FIGHT MINERAL BUILD UP
- KEEP SOFTENER CLEAN & RUNNING LONGER



80 lbs. \$7.69
50 lbs. \$4.99

MORTON SUPER Pellets

80 lbs. \$8.99
40 lbs. \$5.19

STOP RUSTY WATER AT YOUR WATER SOFTENER



We also carry
White crystal rock salt & safety salt, too!

WE WANT TO BE YOUR
FARM • GARDEN • LIVESTOCK & PET
STORE!

WOLVERINE GLASS WORKS

Residential • Auto Glass • Commercial •
OVER 60 YEARS IN BUSINESS
"One Source For All Glass Needs"
Servicing Ann Arbor & Surrounding Areas
7444 DEXTER/ANN ARBOR RD.
426-5600 665-2223
* A division of Jackson Glass Works, Inc.

The Humane Society of Huron Valley
and
Pet Supplies "Plus" of Ann Arbor
Discount Pet Foods & Supplies
present
Santa Paws
Pet Photos taken with Santa Claus himself!
Date: Saturdays, Dec. 5 and Dec. 12
Time: 10 am to 6 pm
Place: Pet Supplies Plus
2639 Plymouth Rd.
Ann Arbor
Cost: \$7.00 for 3x4 matted photo
\$7.00 for 2 wallet-size photos
\$12.00 for entire package
All proceeds from this event will directly benefit the animals at the Humane Society of Huron Valley
To make a photo appointment with Santa Paws, please call (313) 662-5585 Monday through Friday.

CONSTRUCTION & MECHANICAL SERVICES, INC.

SERVICES WE OFFER:
MECHANICAL CONSTRUCTION
• PLUMBING • NEW HOMES
• HEATING • ADDITIONS
• COOLING • DECKS
• ELECTRICAL • PORCHES
• CARPENTRY • MASONRY
FREE In-Home Estimates
475-0420
Licensed & Insured

Call for a quote on your auto or homeowners insurance.
Compare Allstate for value. Absolutely no obligation. Call now for an estimate.
Allstate
Allstate Insurance Company
JANET COOLEY GLIMA GRAY
3645 JACKSON ROAD
Near Wagner Rd.
995-0700
Leave it to the Good Hands People.

WATERLOO TREE FARM

SPRUCE-FIR-PINE
U-CUT CHRISTMAS TREES
• POTTED TREES •
• NURSERY STOCK •
Retail • Wholesale
(313) 475-7631
475-2433

Save your water-softening system and Save yourself money
MORTON Pellets SYSTEM SAVER 80 lbs. \$7.69
50 lbs. \$4.99
MORTON SUPER Pellets 80 lbs. \$8.99
40 lbs. \$5.19
STOP RUSTY WATER AT YOUR WATER SOFTENER
We also carry White crystal rock salt & safety salt, too!
WE WANT TO BE YOUR FARM • GARDEN • LIVESTOCK & PET STORE!

Church Services

Assembly of God—
FIRST ASSEMBLY OF GOD
1490 Old US-12, Chelsea
The Rev. N. James Massey, Pastor.
Every Sunday—
9:45 a.m.—Sunday school.
10:45 a.m.—Sunday morning worship, and children's service.
6:00 p.m.—Evening service.
7:00 p.m.—Mid-week services.

CHELSEA CHRISTIAN FELLOWSHIP
827 Wilkinson St.
Church tel. 479-8305
Every Sunday—
8:00 a.m.—Overcamers Worship Service.
9:30 a.m.—Coffee, juice and fellowship.
10:30 a.m.—Sunday school for all ages.
10:45 a.m.—Worship service and Children's Church.
6:00 p.m.—Evening Service.
Every Wednesday—
7:00 p.m.—Family Night.
Van pickup available for Sunday morning and Wednesday evening.

Baptist—
FIRST BAPTIST CHURCH OF GREGORY
The Rev. Richard Mathew, Pastor
Every Sunday—
9:45 a.m.—Sunday school.
11:00 a.m.—Morning worship.
7:00 p.m.—Evening worship.
Every Wednesday—
7:00 p.m.—Mid-week service.
8:00 p.m.—Choir practice.
NORTH SHARON BAPTIST
Sylvan and Washburne Rds.
Bill Winger, Pastor
Every Sunday—
10:00 a.m.—Sunday school.
11:00 a.m.—Morning preaching service.
Every Wednesday—
7:00 p.m.—Bible study and prayer meeting. Nursery available at all services.

Catholic—
ST. MARY
The Rev. Fr. David Philip Dupuis, Pastor
Every Sunday—
8:00 a.m.—Mass.
10:00 a.m.—Mass.
Every Saturday—
12:00 noon-1:00 p.m.—Confessions.
8:00 p.m.—Mass.
Christian Scientist—
FIRST CHURCH OF CHRIST SCIENTIST
1883 Washtenaw Ave., Ann Arbor
Every Sunday—
10:30 a.m.—Sunday school, morning service.

Church of Christ—
CHURCH OF CHRIST
13951 Old US-12, East
Minister, R.D. Farnell
Every Sunday—
9:30 a.m.—Bible classes, all ages.
10:30 a.m.—Worship service. Nursery available.
6:00 p.m.—Worship service. Nursery available.
Every Wednesday—
7:00 p.m.—Bible classes, all ages.
First and Third Tuesday of every month—
7:00 p.m.—Ladies class.

Episcopal—
ST. BARNABAS
2650 Old US-12
(Directly across from the Fairgrounds)
The Rev. Fr. Jerrold F. Beaumont, O.S.P.
Every Sunday—
10:00 a.m.—Worship and Holy Communion.
10:00 a.m.—Church school, K-12.
10:00 a.m.—Nursery.
11:00 a.m.—Family coffee hour.

Free Methodist—
CHELSEA FREE METHODIST
7855 Warkner Rd.
Mearl Bradley, Pastor
G. Harry Bonney, Associate Pastor
Wednesday, Dec. 9—
7:00 p.m.—Midweek service. Nursery, CLC, junior and senior teens, adults, choir, and One Another Ministries.
Thursday, Dec. 10—
8:00 a.m.-8:00 p.m.—Blood drive at Our Savior Lutheran church.
7:00 p.m.—Finance committee.
8:00 p.m.—Official board.
Friday, Dec. 11—
7:00 p.m.-8:30 p.m.—Adult choir and cantata rehearsal.
Saturday, Dec. 12—
9:00 a.m.-3:00 p.m.—Conference quizzing.
7:30 p.m.—Cantata.
Sunday, Dec. 13—
8:30 a.m.—Early Celebration.
9:30 a.m.—Coffee Fellowship.
11:00 a.m.—Morning Celebration.
6:00 p.m.—Evening Vespers and Cantata.

Lutheran—
FAITH EVANGELICAL
9975 North Territorial Rd.
The Rev. Mark Potinsky, Pastor
Wednesday, Dec. 9—
7:30 p.m.—Advent II worship.
8:30 p.m.—Choir.
Saturday, Dec. 12—
9:30 a.m.-11:00 a.m.—Christmas Eve rehearsal.
Sunday, Dec. 13—
9:00 a.m.—Sunday school.
10:00 a.m.—Worship service.
11:00 a.m.—Coffee hour.
Monday, Dec. 14—
6:30 p.m.—Ladies revealing sisters Christmas party.
8:30 p.m.—8:30 p.m.—Girl pioneers party.
Tuesday, Dec. 15—
8:00 p.m.—8:00 p.m.—Confirmation.

OUR SAVIOR LUTHERAN
1815 S. Main, Chelsea
The Rev. Franklin H. Giebel, Pastor
Wednesday, Dec. 9—
7:00 p.m.—Advent midweek II communion.
Thursday, Dec. 10—
8:00 a.m.-8:00 p.m.—Our Savior blood drive.
7:00 p.m.—Council meeting.
Sunday, Dec. 13—
9:00 a.m.—SS/Bible classes.
10:30 a.m.—Worship.
11:30 a.m.—Voters' meeting. AAL roll call.
8:30 p.m.—Confirmation.
Monday, Dec. 14—
Anniversary of dedication, phase II, 1986.

ST. JACOB EVANGELICAL LUTHERAN
12501 Riehmiller Rd., Grass Lake
The Rev. Paul C. Stratman, Pastor
Every Sunday—
8:00 a.m.—Sunday school, Family Bible Study.
10:15 a.m.—Worship service.

ST. THOMAS LUTHERAN
10001 W. Ellsworth Rd.
(9 miles south and 3 miles west of Dexter)
The Rev. John Riske, Pastor
Sunday, Dec. 13—
Annual Voters' Budget Meeting and Potluck dinner.
9:30 a.m.—Sunday school.
10:45 a.m.—Worship.

TRINITY LUTHERAN
5756 M-36, three miles east of Gregory
Robert Carlton, Vacancy Pastor.
Every Sunday—
8:00 a.m.—Sunday School and Bible Class.
10:15 a.m.—Worship.
Communion first and third Sunday.

ZION LUTHERAN E.L.C.A.
Corner of Fletcher and Waters Rd.
The Rev. Mark Weirauch, Pastor
Wednesday, Dec. 9—
7:30 p.m.—Business.
8:00 p.m.—Church council.
Thursday, Dec. 10—
7:15 p.m.—Senior choir.
Saturday, Dec. 12—
9:00 a.m.-noon—Catechism.
9:30 a.m.-11:00 a.m.—Christmas program and practice.
Altar guard decorates church.
Sunday, Dec. 13—
9:00 a.m.—Sunday school.
10:15 a.m.—Worship.

Methodist—
SALEM GROVE UNITED METHODIST
3320 Nottan Rd.
The Rev. Jim Paige
Every Sunday—
9:30 a.m.—Church school.
10:30 a.m.—Morning worship.

FIRST UNITED METHODIST
Parks and Territorial Rds.
Pastor Wayne Willer
Every Sunday—
9:30 a.m.—Worship service.
10:00 a.m.—Sunday school.

WATERLOO VILLAGE UNITED METHODIST
8118 Washington St.
Pastor Wayne Willer
Every Sunday—
10:00 a.m.—Sunday school.
11:15 a.m.—Worship service.

FIRST UNITED METHODIST
128 Park St.
The Rev. Richard L. Duke, Pastor
Every Sunday—
8:30 a.m.—Worship service.
9:45 a.m.—Sunday school.
11:00 a.m.—Worship service.

CHELSEA RETIREMENT COMMUNITY CHAPEL
805 W. Middle St.
The Rev. Dr. J. Gordon Schleicher
Every Sunday—
9:30 a.m.—Worship service.

NORTH LAKE UNITED METHODIST CHURCH
14111 North Territorial Road
The Rev. Wayne Hawley, Pastor
Every Sunday—
9:30 a.m.—Church school.
10:30 a.m.—Worship service.
11:30 a.m.—Fellowship time.
6:00 p.m.—Youth Group.
SHARON UNITED METHODIST
Corner Pleasant Lake Rd. and M-52
The Rev. Peggy Paige, Pastor
Every Sunday—
10:00 a.m.—Sunday school.
11:00 a.m.—Worship service.

Mormon—
CHURCH OF JESUS CHRIST OF LATTER-DAY SAINTS
1330 Freer Rd.
Sam Skidmore, branch president
517-458-7876 or leave a message at 475-1778
Every Sunday—
9:30-10:20 a.m.—Adult and Youth Sunday.
9:30-11:15 a.m.—Primary School.
10:20-11:15 a.m.—Priesthood and Relief Society.
11:20-12:30 p.m.—Sacrament meeting.

Non-Denominational—
CHELSEA HOSPITAL MINISTRY
Every Sunday—
10:00 a.m.—Morning service, Chelsea Community Hospital Chapel.

COVENANT
60 N. Freer Rd.
The Rev. Siegfried S. Johnson, Pastor
Every Sunday—
9:00 a.m.—Church school.
10:30 a.m.—Worship.
11:30 a.m.—Choir.

CHELSEA FULL GOSPEL
775 S. Main St. (FIA building.)
John & Sarah Grosser, Pastors
478-7379
Every Sunday—
10:15 a.m.—Prayer and healing team.
11:00 a.m.—Praise and worship.
6:00 p.m.—Praise and worship.
Every Wednesday, Family Night—
7:00 p.m.—Church school classes for all ages. (Classes meet in lower level of First Assembly, 1490 Old US-12.)

IMMANUEL BIBLE
145 E. Summit St.
Ron Clark, Pastor
Every Sunday—
9:45 a.m.—Sunday school, nursery provided.
11:00 a.m.—Morning worship, nursery provided.
6:00 p.m.—Evening worship.
Every Wednesday—
7:00 p.m.—Family hour, prayer meeting and Bible study.

MT. HOPE BIBLE
12884 Triet Rd., Grass Lake
The Rev. Joseph A. O'Neill, Pastor.
Every Sunday—
10:00 a.m.—Sunday school.
11:00 a.m.—Morning worship.
6:00 p.m.—Evening service.
Every Wednesday—
7:00 p.m.—Bible study.

ST. VLADIMIR ORTHODOX CHURCH
The Rev. Fr. Paul Karas, Pastor
9900 Jackson Rd.
(between Steinbach and Dancer Rds.)
Sunday Services—
9:30 a.m.—Hour.
9:00 a.m.—Holy Confession.
10:00 a.m.—Divine Liturgy.

NEW LIFE CHRISTIAN CENTER
50 Freer Rd. (Covenant church)
Pastors Erik & Mary Hansen
Every Sunday—
9:00 a.m.—Praise, worship, Children's Church.
12:30 p.m.—In home meetings.
6:00 p.m.—Women of Faith meets in homes.
1st Monday of the month—
7:00 p.m.—Women of Faith meets in homes.
Every Wednesday—
7:00 p.m.—Praise and prayer.

Presbyterian—
FIRST UNITED PRESBYTERIAN
2075 Williamsville Rd., Onadilla
The Rev. Mary Groty
Every Sunday—
9:30 a.m.—Sunday school.
11:00 a.m.—Worship service.

United Church of Christ—
BETHEL EVANGELICAL AND REFORMED
Freedom Township
The Rev. Roman A. Reineck, Pastor
Every Sunday—
10:00 a.m.—Worship service.

CONGREGATIONAL
121 East Middle Street
The Rev. J. Keith Roberson, Interim Minister
Office hours: Monday-Friday, 9 a.m.-12 p.m.
Every Sunday—
10:00 a.m.—Worship.
10:00 a.m.—Sunday school, K-7. Nursery provided.
Every Thursday—
7:00 p.m.—Choir practice.

ST. JOHN'S
Rogers Corners, Waters and Fletcher Rds.
The Rev. Nancy Doty, Pastor
Every Sunday—
9:00 a.m.—Worship service, Sunday school.

ST. JOHN'S EVANGELICAL AND REFORMED
Francisco
The Rev. Gordon Hills
Every Sunday—
10:30 a.m.—Sunday school and worship service.
First Sunday of every month—
Communion.

ST. PAUL
The Rev. Erwin R. Koch, Pastor
Wednesday, Dec. 9—
6:30 p.m.—Children's choir.
7:30 p.m.—Chancel choir.
Friday, Dec. 11—
7:00 p.m.—Discovery group caroling at Lockers.
Saturday, Dec. 12—
9:00 a.m.-11:00 a.m.—Sunday school pageant practice.
Sunday, Dec. 13—
Sunday school pageant—"Christmas Wishes"
9:00 a.m.—6th grade church school, 7th and 8th grade confirmation.
10:30 a.m.—Worship for all ages. Nursery through 5th grade church school.
12:45 p.m.—Advent workshop.
Tuesday, Dec. 15—
7:30 p.m.—Church Council.

An NAIC Service **NAIC**
Today's Investor



By **Ralph L. Seger, Jr.**
CFA
President
NAIC Investor Advisory Service

Q. Would you comment on Telefonos de Mexico, S.A. (TelMex). I bought some awhile back at the suggestion of a friend. It has gone up and then backed off from its high. How do you get reliable information on a stock from another country?

A. Telefonos de Mexico provides all domestic and international fixed link and cellular mobile telephone services in Mexico. It is this fast growing country's third largest company and the largest that is publicly traded. The company's American Depository Receipts (ADRs) are listed and traded on the New York Stock Exchange. Many ADRs of foreign companies are listed on U.S. stock exchanges or traded in the over-the-counter market. Reliable information is readily available from a number of sources, usually in your public library or at a full service broker. Look for Value Line which provides reports on 44 foreign companies in addition to a number of Canadian ones. Also, look for Standard & Poor's which produces reports on many foreign companies whose ADRs are traded in the U.S. Also, in the library ask for Moody's Investment Manual. It provides basic information on many companies, including foreign ADRs. Some foreign companies translate their reports to share holders into English and the U.S. accounting system. Many have U.S.-based shareholder information offices. Be aware there is always a currency risk. Since the companies keep their books in their home country currency, any variation in value between the U.S. dollar and the foreign currency can have a favorable or unfavorable effect on reported profits. Of course, a number of U.S. companies have 50% or more of their business overseas, so they also have a currency risk.

Investment Idea for Today's Investor
Total Systems Services (TSS), 26 1/2, is listed on the NYSE. The company provides a comprehensive, on-line credit card processing service marketed to banks and other issuers of credit cards such as AT&T.

CLASSIFIED ADS
Really work


CHELSEA SELF STORAGE
18000 BROWN DRIVE, CHELSEA
HOURS: Mon.-Fri. 11:30-5:30
Sat. 9-3
(313) 475-8888
or
1-800-258-0036

ROSENTRETER EXCAVATING INC.
475-1990
Quality Service is Our Business
Basements-Drainfields-Septic Tanks-Sewer
Roofhoe Work-Bulldozer-Trucking-Grovel
Sand-Toppsoil-Snow Removal

Get a "Quote"
from the
JACK SCHLAFF AGENCY
• Life • Homeowner • Auto • Boat • Motorcycle
Michigan
Call 426-3516
HOURS: Mon.-Fri. 8 a.m.-5 p.m.
7444 Dexter-Ann Arbor Rd.
Dexter, MI 48130

SATELLITE SYSTEMS
Sold-Installed Serviced
Channel Master
Houston Tracker
STS - Winegard
Chaparral - Drake
We also service
Other Leading Brands
LOY'S TV
312 N. Maple Rd., Ann Arbor
Ph. 769-0198
Open M & F 9-9; T-W-Th-S, 9-8
Other credit plans available

When it's money you need
We have funds to lend. For those smaller purchases, consider a personal loan. With a good credit standing, it shouldn't be a problem to take care of your needs.
Stop in, discover the versatility and customer service you enjoy when banking with a locally owned independent bank.



HOLIDAY HOURS:
Thursday, Dec. 24th Drive-up CLOSÉS at 3 p.m.
Friday, CHRISTMAS DAY..... CLOSED
Saturday, Dec. 26th..... CLOSED
Thursday, Dec. 31st Drive-up CLOSÉS at 3 p.m.
Friday, NEW YEAR'S DAY..... CLOSED
Saturday, Jan. 2nd..... CLOSED

CSB Local People Like You
CHELSEA STATE BANK
MEMBER FDIC

PEACE PEACE PEACE PEACE PEACE
Love's Pure Light
A Musical Christmas Experience
Saturday, December 12 at 7:30 pm
Sunday, December 13 at 6:00 pm
at the Chelsea Free Methodist Church
7855 Warkner Road, Chelsea
(313) 478-1391
Chelsea
I-94
M-52

We don't care if you paint your hair blue, rip the sleeves off your shirt or pierce your ear.
But don't smoke just to be like your friends. Or to be different from your friends. Or to be anything at all. Because with everything we know about cigarettes today, there's only one thing you'll be if you start smoking now. And that's sorry. Sorry you can't get up in the morning without coughing your lungs out. Sorry you can't climb a single flight of stairs without getting winded. Sorry that every time you light one up, your risk of heart disease goes up. If you're already a smoker, take some time to stop and think it all the way through. Right now, it's your decision. In the long run, it's your life.
WE'RE FIGHTING FOR YOUR LIFE
American Heart Association



STUDENTS in oral class, along with their teacher, Mary Ellen Myning, pose beside a Tianjin University building. The photo was taken on one of the last warm days in September, Myning related. She is in the center of the photo in middle row. Chinese students were not identified.

Chinese American Hotel Tries To Make Thanksgiving Like Home

By Mary Ellen Myning

Dear Friends,
Well another couple of weeks have passed since I wrote you and as usual, it has not been business as usual.

For Thanksgiving the foreign teachers stormed a local western hotel eager for turkey and the trimmings. The price was high—70 yuan (Chinese word for dollar) each, but we knew it would be worth every penny if we could just smell pumpkin pie, gorge on turkey and dressing, feast on salads.

I began to suspect things might not be perfect when I trotted over to the salad bar. Sweet pickles and dill were lumped into the same container, olives jauntily sat atop a pineapple and tuna mixture, the dressing was bright pink—oh well, we loaded up on tomatoes, rolls, pear halves. After all, we reasoned at the table, you have to be flexible, they ARE trying to get it right. And nobody can screw up turkey, right?

One of the teachers, David, perhaps the smartest of our group, ordered a very large glass of alcohol—just in case, he murmured. In case of what, I wondered. Meanwhile, another teacher, Joyce, was busily stuffing her pockets with sugars, matches, and butter packets. She, no fool, knew how hard it is to get these things here. And when they are available, they are expensive. Let me explain. The Chinese matches are so slim as to be almost non-existent (we DO have a tree shortage over here), thus striking one of these little babies is difficult. In addition, the "FDA" and what they stand for "does" not have a Chinese equivalent; therefore, when you buy a bag of sugar you will often find many impurities in it. So Joyce's hunting and gather skills are admired by us all.

But to return to the Thanksgiving dinner, when I approached the main course tables I was greeted with bloody turkey, oily corn fritters (minus the corn), and, what we thought were hamburger patties, but which in fact turned out to be patties of dressing where the main ingredient was liver. Cheerfully, the short, plump, positively bubbling with good humor chef sliced off some red turkey from one of the six turkey legs on his platter and piled it on my plate. Hurriedly I returned to the table where I ordered still more rolls and made the decision that sweet-pickles DO go with dill. It was either that or turn into



THREE CHINESE STUDENTS who Mary Ellen Myning teaches at Tianjin University are shown in their dormitory room. Six students share each of these small rooms.

Ramboette and attack the chef with my chopsticks.

Later, so that the evening would not be a total loss, we marched into the bar where we listened to a young Philippine couple sing old Karen Carpenter tunes, while a group of young Frenchmen hooted and tried to sing "modern" songs from France.

By 11:00 we were exhausted from so much "thrilling fun" and headed home, only to find we were locked out of the building. After much yelling and banging on the doors, the old man, our stalwart night clerk, roused himself from his slumber and scolded us for being unthoughtful and wild. Thus ended my second Thanksgiving in China.

Lest you feel sorry for me, it must be added that Joyce went to her room and returned to my room with 5 Snickers, David went to his room and came back with a loaf of bread and a can of Pringles his mom had sent and I contributed a jar of Cheese Whiz. We ate, laughed, then went to our respective rooms to call home and wish our families a wonderful holiday.

One last note, modern fiction (paperbacks), up-to-date cassette tapes, American stamps are all much sought after over here by the students (and teachers). If any of you would like to send them to me I would be glad to pass them around to eager and anxious students—heck, I am so desperate I even wrote my Congressmen asking them for postcards of the capitol.

The students here are gallant, hard-working, in love with America and all it stands for, and they keep the dream alive. But we have so little to work

with here, most of our textbooks are from the 60's and 70's. The students can read Twain and Poe, but have never heard of Faulkner, Frost, Steinbeck. Mysteries, mild romances, science fiction, fantasy, all are alien to them. I have students who have never ridden in a car, never dialed a phone—why, they don't even know the Rolling Stones! Therefore, if possible, we all would be grateful for even the smallest thing you could do. Thank you.

My address is:
300072 China
Mary Myning
Foreign Expert House, Room 104
Tianjin University
Tianjin, China 30072

Mary Ellen Myning.

CHS Student Council To Sponsor Dance Dec. 18

Chelsea High School Student Council will sponsor a dance in the cafeteria following the Friday, Dec. 18 varsity home basketball game against the Lincoln Rallsplitters.

Cost is \$3 per person and \$5 per couple. The dance will end at 11:30 p.m.

Other student council activities this winter include a Fun Night at Chelsea Lanes for high school students, t-shirt sales at basketball games, and projects to improve the school's appearance.

The council also plans to purchase a large sign for the front of the high school.

Dexter Man Completes Navy Basic Training

Navy SR Jeremy M. Gillespie, son of Mr. and Mrs. William Gillespie of 10523 Island Lake Rd., Dexter, recently completed basic training at Recruit Training Command, San Diego, Calif.

During the cycle, recruits are taught general military subjects designed to prepare them for further academic and on-the-job training in one of the Navy's 85 occupational fields.

Studies include seamanship, close-order drill, naval history and first aid.



DEXTER LIONS CLUB

Christmas Tree Sale

Has Moved to
the Dexter High School

2615 Baker

Over 600 beautiful Spruce, Scotch Pine, Douglas Fir and Fraser Fir Trees to add beauty and color to your holiday.

Again this year!!

Stand straight tree stands from \$12 to \$16. These durable stands will provide many years of use.

The Lions Tree lot is manned by all volunteer labor. All proceeds go to community projects.



"The Tree with a Heart."

START THE HOLIDAYS ON THE RIGHT NOTE.

Send the FTD® Brass Horn® Bouquet. Just call or visit us today. Christmas is Friday, December 25.

\$40 and up

It's as easy as FTD

Or send the FTD® Holly Basket Bouquet. \$27.95 and up



DEXTER FLOWERS & GIFTS

8034 MAIN ST., DEXTER
PHONE 426-3240

MAIN STREET FLOWER SHOP

114 N. MAIN ST., SYLVAN BLDG., CHELSEA
PHONE 475-3040

Delivery & Out-of-Town charges, a little extra.

Staying Up Late At Night



Late Night Specials

1100 S. Main
Chelsea

475-8833

Unlimited Toppings

After 8:00 p.m., for only \$9.95 (plus tax) get any pizza, any size, with any number of toppings.

\$9.95

(plus tax)

Cottage Inn Pizza
Since 1948
Like pizza was meant to be

Valid only at Chelsea Cottage Inn Pizza. Not valid with any other offers. Expires December 31, 1992.

Second Pizza \$3.00

After 8:00 p.m. buy any pizza and get a second pizza with the same number of toppings for only \$3.00.

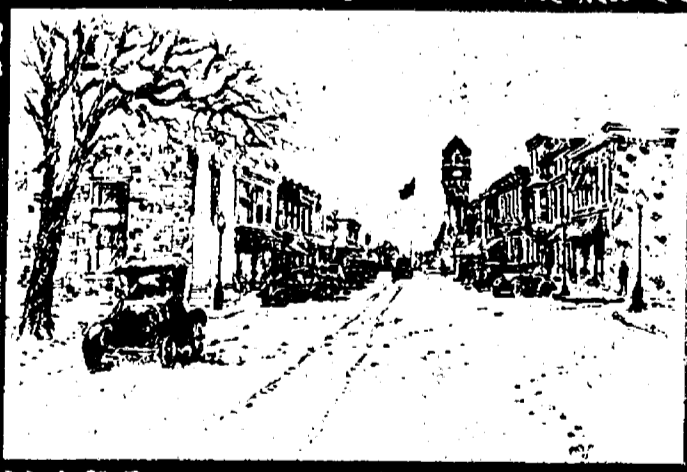
\$3.00

(Plus tax)

Cottage Inn Pizza
Since 1948
Like pizza was meant to be

Valid only at Chelsea Cottage Inn Pizza. Not valid with any other offers. Expires December 31, 1992.

CHELSEA AREA HISTORICAL SOCIETY



1993 Calendar with drawings of historical Chelsea scenes

Chelsea Area Historical Society

Presents their new

1993 HISTORICAL CALENDAR

Now on Sale at:

•Harper Shoe Co., 107 N. Main St.

OR

•Accent on Travel, 102 N. Main St.

or from any member of the Historical Society or the Women's Fastpitch Softball team.

A Great Christmas Idea!

Cost: \$5.00

(Plus \$1.00 postage on mail orders)

MAIL ORDERS TO: Chelsea Historical Society
P.O. Box 482
Chelsea, MI 48118

Name _____

Address _____

City _____ State _____

Amount Enclosed: _____

PUT IT IN THE WANTED ADS FOR RESULTS

Just Phone 475-1371

Automotive 1 | Automotive 1 | For Sale 4 | CLASSIFICATIONS | Animals & Pets 6 | Help Wanted 8 | Help Wanted 8

Private Owner

1979 Ford 302 engine, 4-speed transmission, \$400.
1977 Ford Pick-up, \$395.
1965 Chevy Pick-up. From California. Good condition, new tires, \$2,500.
1977 Chevy Blazer with plow. Needs work, \$1,000.
Phone 761-5376 or 769-1138
c21f

BODY SHOP

COMPLETE FULL TIME Estimates Available

PALMER FORD
222 S. Main 475-1301
17H

PALMER FORD-MERCURY
MICHIGAN'S OLDEST FORD DEALER

1990 FORD F-150 — 4x4, two tone, like new. PALMER PRICE \$10,850

1991 LINCOLN — Continental, one owner, low miles. Cost new \$32,500. PALMER PRICE \$16,400

FORD EXPLORERS — 3 to choose from. Priced from \$16,000

1992 GEO TRACKER — 4x4, only 13,000 miles, like new, full warranty. Only \$9,900

1990 RANGER — Super Cab, 4x4, one owner, low miles. Only \$15,900. PALMER PRICE \$11,450

1982 CHEVY SILVERADO C-20 Crew Cab. Like new, with 5th wheel plate for travel trailer. Only \$8,895

1989 F-150 4x2. One owner. Only 54,000 miles \$7,495

HOME OF CHELSEA AUTO CREDIT WE FINANCE MOSTLY ONE OWNER VEHICLES JUST MINUTES AWAY 1/4 AT M-52, CHELSEA

PALMER
313-475-1800

Frank Grohs
CHEVROLET-GEO THE SHOWROOM OUTLET
426-4677

We Buy Used Cars & Trucks
Bring your title and a smile!

1990 SILVERADO 4x4 Loaded, low miles. \$14,345

1990 F-150 4x4 XLT. Loaded. \$11,945

1988 BERETTA GT V-6, auto., air. Sharp. \$5,545

1990 BERETTA Indy Edition—auto., loaded. Sharp. \$9,345

1991 S-10 PICK-UP. Low miles. Cassette. \$6,495

7128-7140
Dexter-Ann Arbor Rd. in Historic Dexter
Ph. 426-4677

Stanley Home Products Christmas Sale

All products and gift items on 25% or more off regular price, Saturday, Dec. 12, 10 a.m. to 5 p.m.

DOOR PRIZE DRAWING
Phone Orders Accepted at (313) 475-3204
12900 Trinkle Rd. c29

BLACK OR ENGLISH Walnuts for sale. \$8/black, \$3/English per quart. 475-2372. c29

MOVING, MUST SELL

'88 CORVETTE—T-tops, loaded. New tires. Ground effects. Low miles. Asking \$15,890.
PORTABLE SPA—1 1/2 h.p., 6'6" square, Redwood siding. Practically new. \$1,850.
ALUMINUM SHED—10' sq. \$190.
LEVOLOR BLINDS—Metallic gold, 4 sets, 65"wx56 1/2, 1 set mauve.
BABY'S CHANGING TABLE and walker, \$30 ea.
Call (313) 498-2777 c29

Furniture For Sale

COUCH and chair—Rust/Brown, \$100.
RECLINER — Rust, \$65.
CHAIR — Brown, \$40.
DRESSING TABLE, 36"x72" with 2-12" leaves, bench and 3 chairs, \$300.
All in good condition. 475-7964 c30

FODOR'S
A Christmas Tree Farm Run By Santa's Elves
YOU CUT - OR PRE-CUT
We've Got Your Size 3 ft. - 18 ft.

PINE
• Austrian
• Scotch
• White

SPRUCE
• Blue
• White

FIR
• Concolor
• Douglas
• Fraser (pre-cut only)

Thousands Pre-Priced — 1,500 at \$5 to \$18
1-94 Exit 150 (3 1/2 miles south of Grass Lake Traffic Light)

FOR SALE (by Bid) — 1973 Ford F-100 Ford Pick-up Truck V.I.N. F10LR09935, as-is condition. May be inspected at the Chelsea Village Garage, 440 W. North Street, from 8:00 a.m. to 3:00 p.m. (Monday through Friday). Bids will be accepted at the Chelsea Village Office, 104 E. Middle Street from 8:00 a.m.-5:00 p.m. beginning December 9, 1992 through December 18, 1992. c29

1983 CHEVY VAN — Good condition, 8-pass. 475-7303 or 475-7305. c29-4

Farm & Garden 2

WATERLOO TREE FARM
Christmas Trees
Cut or U-Cut
• Pines
• Colorado Blue Spruce
Also, large, perfect and imperfect trees. Great for property lines and windbreaks.
Call 475-7631 c31-4

CHRISTMAS TREES
WHOLESALE PRICES
7544 Walsh Rd., Dexter (between W. Huron River Dr. and Mast Rds.) c30-3

CHRISTMAS TREES — 10'-20'. You-cut or pre-cut. Call 426-5284. c30-3

CHRISTMAS TREES
Also, Fresh Wreaths
YOU CUT or WE CUT
Starting Fri., Nov. 27
Hours: Fri. and Sat., 9 a.m. to 5 p.m. Sunday, 1 p.m. to 5 p.m. Other days by appointment

Reno & Nancy Feldkamp
Ph. 428-8571

APPLES
McIntosh \$7/bu.
IDA RED & RED DELICIOUS \$9/bu.
Call 426-8009 before coming.
LESSER FARMS — Dexter c31-4

CHRISTMAS TREES
PRICES REDUCED TO \$10 or less
7544 Walsh Rd., Dexter (between W. Huron River Dr. and Mast Rds.) c30-3

For Sale 4

Stanley Home Products Christmas Sale

All products and gift items on 25% or more off regular price, Saturday, Dec. 12, 10 a.m. to 5 p.m.

DOOR PRIZE DRAWING
Phone Orders Accepted at (313) 475-3204
12900 Trinkle Rd. c29

BLACK OR ENGLISH Walnuts for sale. \$8/black, \$3/English per quart. 475-2372. c29

MOVING, MUST SELL

'88 CORVETTE—T-tops, loaded. New tires. Ground effects. Low miles. Asking \$15,890.
PORTABLE SPA—1 1/2 h.p., 6'6" square, Redwood siding. Practically new. \$1,850.
ALUMINUM SHED—10' sq. \$190.
LEVOLOR BLINDS—Metallic gold, 4 sets, 65"wx56 1/2, 1 set mauve.
BABY'S CHANGING TABLE and walker, \$30 ea.
Call (313) 498-2777 c29

Furniture For Sale

COUCH and chair—Rust/Brown, \$100.
RECLINER — Rust, \$65.
CHAIR — Brown, \$40.
DRESSING TABLE, 36"x72" with 2-12" leaves, bench and 3 chairs, \$300.
All in good condition. 475-7964 c30

FODOR'S
A Christmas Tree Farm Run By Santa's Elves
YOU CUT - OR PRE-CUT
We've Got Your Size 3 ft. - 18 ft.

PINE
• Austrian
• Scotch
• White

SPRUCE
• Blue
• White

FIR
• Concolor
• Douglas
• Fraser (pre-cut only)

Thousands Pre-Priced — 1,500 at \$5 to \$18
1-94 Exit 150 (3 1/2 miles south of Grass Lake Traffic Light)

USED APPLIANCES
Self-cleaning Electric Ranges From \$150
Maytag gas and electric dryers, starting from \$150
Reconditioned Refrigerators From \$150
Amana 20 cu. ft. bottom freezer refrigerator, 5 years old. \$500.
G.E. 19 cu. ft. Deep Door Refrigerator. Like new. 1 year compressor warranty. \$450

HEYDLAUFF'S
113 N. Main
Ph. 475-1221

PANCAKE BREAKFAST
Sunday, Dec. 13th
8 to 10:30 a.m.
Waterloo Village
United Methodist Church c29

2nd Annual Christmas at THE DEPOT CRAFT SHOW
Saturday, December 12
9:00 a.m. till 4:00 p.m.
125 Jackson St.
Chelsea
Wheelchair Accessible c29

BLACK WALNUT meats; also walnuts in shell. Paul Seitz, Ph. 475-1939. c32-5

FREE '78 Suburban split back-seat. Call 475-1371. c29-3

HIGGINS HARDWOOD FLOORS — See our Holiday Specials in this edition of The Chelsea Standard. Call 1-(517) 565-3031. c35-10

DECORATE for The Holidays
Wallpapering & Painting
Quality work. Free estimates.
Call 426-1955 c29-4

WOODSTOVE — Kenline free standing convection with 12 ft. of insulated stainless chimney and platform. Cost \$1,300. Will sell for \$650. Call (313) 475-8669. c151f

PIONEER POLE BUILDING. 30x40x10, \$5,390. 12 colors, 2x6 truss system, 12' slider, 36" entrance door. Overhead doors available. Other sizes and options. Free quotes. 800-292-0679. c491f

SCRATCH PADS — Kid's Drawing paper at The Standard and Leader's offices. 300 N. Main St., Chelsea. c451f

SIGNS, SIGNS, SIGNS — We have the one you're looking for at The Chelsea Standard, 300 N. Main St., Chelsea. 141f

WEDDING STATIONERY — Prospective brides are invited to see our complete line of invitations and wedding accessories. The Chelsea Standard, 300 N. Main. Ph. 475-1371. x81f

Antiques 4c

AGE-OLD WINTER ANTIQUES MARKET — Ann Arbor. Dec. 12-13. U-M Caliseum. 150 Dealers in Quality Antiques from Furniture to Jewelry. Sat. 7-6; Sun. 8-4. 1-94 Exit 175, north to Hill St., right to 5th. (517) 456-6153. c29-2

GOLDEN AGE ANTIQUE MALL
Two floors of Quality Antiques and Collectibles
10 mins. west of Chelsea on Old Michigan Ave. or Exit 150 off I-94
219 E. Michigan
Grass Lake, Mich.
(517) 522-4600
Open
Tues.-Sat., 10-5
Sun., 12-5
Dealer Inquiries welcome c31-4

Free Wagon Rides & Elf Land
Available: Wrapping, Shaking, Saws & Refreshments
Potted Trees - Wreaths
Roping - Grave Blankets
Beginning Nov. 27
OPEN DAILY
10 a.m. to 6 p.m.
PHONE
(517) 522-4982

CLASSIFICATIONS

Automotive.....1
Motorcycles.....1a
Farm & Garden.....2
Equipment, Livestock, Feed
Recreational Equip.....3
Boats, Motors, Sewingmachines,
Sports Equipment.....3
For Sale (General).....4
Auction.....4a
Garage Sales.....4b
Antiques.....4c
Real Estate.....5
Land, Homes, Cottages
Mobile Homes.....5a
Animals & Pets.....6
Lost & Found.....7
Help Wanted.....8
Work Wanted.....8a
Adult Care.....9

Child Care.....10
Wanted.....11
Wanted to Rent.....11a
For Rent.....12
Houses, Apartments, Land
Misc. Notices.....13
Personals.....14
Entertainment.....15
Bus. Services.....16
General
Carpentry/Construction
Electricity/Landscaping
Maintenance
Repairs
Tutoring/Instruction
Financial.....17
Bus. Opportunity.....18
Thank You.....19
Memorials.....20
Legal Notice.....21

CLASSIFIED ADS THANK YOU/MEMORIAL

CASH RATES:
10 figures.....\$1.00
10¢ per figure over 10
When paid by noon Saturday

CHARGE RATES:
10 figures.....\$3.00
Minimum charge: \$5.00

CASH RATES:
50 figures.....\$2.00
10¢ per figure over 50
When paid by noon Saturday

CHARGE RATES:
50 figures.....\$5.00

DEADLINES
CLASSIFIED PAGES
Saturday, 12 noon
"CONTINUED" CLASSIFIEDS
Monday, 12 noon

Real Estate 5

BRIDGETOWN CONDOMINIUMS
• 2-bedroom, 2 bath
• attached garage
• full basement
• patio deck
• central air
• traditional interiors
with GE built-ins
Ranch and Town House
Model Available
from \$129,900
Chelsea - 475-7810 c251f

Falsetta's Real Estate

CAVANAUGH LAKE—Rustic wooded setting, 3 bedrooms, fireplace, 90 ft. of sandy beach. \$159,000.
AFFORDABLE—2-bedroom ranch, hardwood floors, full basement, formal dining, Ann Arbor City. \$79,900.
VACANT—10 acres, wooded building site, paved road, 3 mi. to Chelsea. \$35,000.

Steve Eseman, 475-3106
Falsetta's Real Estate,
769-1400 c29

COUNTRY HOME for sale — 3-bedroom ranch, 2 baths. Garage. Born. 15 acres. Grass Lake schools. Close to I-94. (517) 522-5196. c29-2

BUILDING SITES — 1 acre and 3 1/2 acre sites. Grass Lake schools. (517) 522-5196. c29-2

FOR SALE BY OWNER — 3-bedroom ranch. New kitchen, bath and carpet. Refrigerator, stove, microwave, washer & dryer all included. Deck. Private lake access. Land contract possible. \$72,000. Call (313) 498-2875. c29-2

DUPLEX FOR SALE — Country setting, North Lake area. Full walk-out basement, each side. 2 acres. Chelsea schools. Ph. (313) 797-5791. c31-4

FOR SALE BY OWNER — Quality built 3-bedroom brick ranch in village. Large 2-car garage. Quiet street. Central air. Large lot. Many extras. \$134,900. Call 475-3498 for complete details. c32-4

Animals & Pets 6

PETSITTING
over 14 years of experience
References. Call Sheri
475-8407 c31-3

Beat the high cost of
DOG GROOMING
\$13.00 everything included. 60-lb. weight limit. 25 years experience. Portage Lake area.
Phone (313) 878-2015 c31-4

MUFFIN — 5-year-old spayed, declawed cat needs new home. Litter-trained indoor, black and brown, short-haired tabby. Call 426-3380. c29-2

LIVE TRAPS — \$4/day rental plus deposit. Farmer's Supply, 122 Jackson St., Chelsea. 475-1777. c261f

Help Wanted 8

BookCrafters:
140 Buchanan
Chelsea, MI 48118
E.O.E. M/F/H c29

Beat the high cost of
DOG GROOMING
\$13.00 everything included. 60-lb. weight limit. 25 years experience. Portage Lake area.
Phone (313) 878-2015 c31-4

MUFFIN — 5-year-old spayed, declawed cat needs new home. Litter-trained indoor, black and brown, short-haired tabby. Call 426-3380. c29-2

LIVE TRAPS — \$4/day rental plus deposit. Farmer's Supply, 122 Jackson St., Chelsea. 475-1777. c261f

Beautiful Selection of pre-cut Christmas Trees

• Douglas Fir • Scotch Pine
• White Pine • Blue Spruce

POTTED BLUE SPRUCE TOOI

SMITH'S TREE FARM
Lingane Road..... just south of
Chelsea's Rod & Gun Club
(313) 475-7530

CHARMING four-bedroom, two-bath Cape Cod in the heart of Chelsea. Fireplace. beautiful woodwork. \$146,900. Connie Woodruff, 761-6600 days/475-3737 eves. 29467.

THE PERFECT RETREAT in the woods. Well-built three-bedroom, two-bath log home in Chelsea. \$179,900. Kathy Jackson, 761-6600 days/677-0240 eves. 28332.

LIGHT AND AIRY Chelsea four-bedroom, 2 1/2-bath in Village Sub. Priced to sell at \$123,500. Darla Bohlander, 761-6600 days/475-1478 eves. 26797.

WOODED, rolling sites in Chelsea. 2.5 and 10 acres, on paved road, two miles from I-94 access. From \$39,000. Darla Bohlander, 761-6600 days/475-1478 eves. 28171.

EDWARD SUROVELL CO./REALTORS
At Home in Chelsea!

Chelsea Office 475-3737

Charmy four-bedroom, two-bath Cape Cod in the heart of Chelsea. Fireplace. beautiful woodwork. \$146,900. Connie Woodruff, 761-6600 days/475-3737 eves. 29467.

THE PERFECT RETREAT in the woods. Well-built three-bedroom, two-bath log home in Chelsea. \$179,900. Kathy Jackson, 761-6600 days/677-0240 eves. 28332.

LIGHT AND AIRY Chelsea four-bedroom, 2 1/2-bath in Village Sub. Priced to sell at \$123,500. Darla Bohlander, 761-6600 days/475-1478 eves. 26797.

WOODED, rolling sites in Chelsea. 2.5 and 10 acres, on paved road, two miles from I-94 access. From \$39,000. Darla Bohlander, 761-6600 days/475-1478 eves. 28171.

Animals & Pets 6

TEMPORARY HOME needed — for calm, mature female Beagle. Call 426-4520 after 4 p.m. c29

DOG GROOMING
in Dexter
Sandy's bark!
(Formerly Dexter Pet & Groom)
Call 426-3712 c30-2

AKC COCKERS — Black, black & tan and buff. 6 weeks and up. Ready for Christmas. Deposit will hold. Call days 9 a.m. to 6 p.m., 426-3712. c30-2

EMERGENCY RESCUE — 24 hour, 7 days. Humane Society of Huron Valley. 662-2374. c471f

SPAY/NEUTER CLINIC — Humane Society of Huron Valley. 662-4365, 9-12, 2-4. c471f

Lost & Found 7

CAT LOST — Long-haired dark grey male tiger. Sylvan and Grass Lake Rd. area. Call 475-7042. c29

LOST/FOUND/ADOPTABLE PETS

ANIMAL SHELTERS
• HUMANE SOCIETY OF HURON VALLEY (313) 662-5585
3100 Cherry Hill Rd., Ann Arbor (off Plymouth Rd. at Dixboro)
7 days, Noon-6 p.m.
• JACKSON COUNTY SHELTER 1-(517) 788-4464
2004 N. Blackstone, Jackson (I-94 Cooper St. exit, right on North St. to Blackstone)
Mon.-Fri. 8-5
• CASCADES HUMANE SOCIETY ADOPTION SERVICE 1-(517) 788-6587
Mon. & Sat. 10-5; Tues.-Fri. 12-5 c471f

Help Wanted 8

Girls Wanted from Ohio and Michigan, between 7 and 19 to compete in this year's 3rd annual 1993 Toledo Pageants. Over \$20,000 in prizes and scholarships. Call today. 1-800-Pageant, ext. 0766 (1-800-724-3268). c29

Data Entry
Progressive book manufacturer has full- and part-time data entry positions available in our customer service position or both day and afternoon shifts. Word processing experience a plus.
Apply in person to
BookCrafters:
140 Buchanan
Chelsea, MI 48118
E.O.E. M/F/H c29

COACHING POSITIONS AVAILABLE
Cheerleading coach — Immediate opening. cheerleading experience/coaching experience preferred.
Varsity Softball Coach — Coaching experience required in softball or baseball; experience playing softball or baseball.
Deadline for applying for both positions is Dec. 14, 1992. Apply to Mr. Dave Swanson, Director of Student Services/Athletics, Manchester High School, 710 E. Main St., Manchester, MI 48158. c29-2

Help Wanted 8

ADULT FOSTER CARE HOME in a Chelsea area residence
When a nursing home isn't a necessity, choose residential living for seniors—24-hr. supervision, meds supervised—balanced meals
(313) 475-9396
Chuck & Kaye McNamara
McNamara's Care Home

Help Wanted 8

ADULT FOSTER CARE HOME in a Chelsea area residence
When a nursing home isn't a necessity, choose residential living for seniors—24-hr. supervision, meds supervised—balanced meals
(313) 475-9396
Chuck & Kaye McNamara
McNamara's Care Home

Help Wanted 8

ADULT FOSTER CARE HOME in a Chelsea area residence
When a nursing home isn't a necessity, choose residential living for seniors—24-hr. supervision, meds supervised—balanced meals
(313) 475-9396
Chuck & Kaye McNamara
McNamara's Care Home

Help Wanted 8

ADULT FOSTER CARE HOME in a Chelsea area residence
When a nursing home isn't a necessity, choose residential living for seniors—24-hr. supervision, meds supervised—balanced meals
(313) 475-9396
Chuck & Kaye McNamara
McNamara's Care Home

Help Wanted 8

ADULT FOSTER CARE HOME in a Chelsea area residence
When a nursing home isn't a necessity, choose residential living for seniors—24-hr. supervision, meds supervised—balanced meals
(313) 475-9396
Chuck & Kaye McNamara
McNamara's Care Home

FRISINGER & ASSOCIATES
935 Main Street, Chelsea MI (313) 475-8681

Chelsea's 1st - established 1964

Paul Frisinger.....475-2621
Chuck Beck.....475-3889
Norm O'Connor.....475-7252
Herm Koehn.....475-2613
Bob Koch.....231-9777

John Pierson.....475-2064
Jim Utlar.....475-2685
Bill Darwin.....475-9771
Jo Ann Warywoda.....475-8674
Mary Lee Lantis.....(517)851-8615

Help Wanted 8

RELIABLE TRANSPORT DRIVER for group home in Dexter. 20 hours/week. \$5.75 per hr. Call Erick at 426-3167 or Annie at 475-9067. c29

ALASKA EMPLOYMENT — fisheries. Earn \$600+/week in canneries or \$4,000+/month on fishing boats. Free transportation Room & Board Male or Female. No experience necessary. Age 18 to 70. Summer or Year-round employment available. For employment program call 1-206-545-4155 ext. A7064. c30-2

Accepting Applications
for
• Wait Staff
• Cashier
• Host/Hostess
• Bus Person
Please call 426-9147
CHINESE TONITE
c32-4

Arthur Murray Dance Studio
of Ann Arbor
is now accepting applications for full- and part-time instructors. Call 994-4600 to set up appointment. c33-5

COMPUTER ORDER ENTRY — Part-time, 1/2 to 1 day per week. Accuracy and attention to detail a must. Call 475-3342. c30-2

SALES OFFICE SECRETARY — Requires experienced typist 8:30 a.m. to noon. Monday through Thursday. Please call 475-2979. c30-2

Certified Nurse Aide
Come join a tradition of quality care at the Chelsea Retirement Community Hire-in-Bonus for Certified Nurse Aide—Benefit Package available. Apply at 805 W. Middle St., Chelsea.
EOE c29-3

COOKS SERVICE ASSISTANTS
Full-time & Part-time
Chelsea Big Boy
Self-motivated, energetic individuals days & nights. Must be 18 years or older. Good wages and potential for advancement. Apply in person, ask for Rodney or Lois. c191f

A LOCAL BRANCH of Michigan Corporation needs to fill several full- and part-time positions. Excellent work conditions and advancement opportunities. No experience necessary. Will train. For interview call between 11 and 4, (517) 782-7329. c39f

TOWN OR COUNTRY ANIMAL SITTING
Daily Visits in or at Your Home/Farm.
INCLUDED AT NO EXTRA CHARGE:
• Plant Watering • Mail/Paper Retrieval
• Lights on/off • Security check.
More involved services available at extra charge. An alternative to kennels/boarding.
No animal too big or small or exotic.
475-0997
Call After 5 p.m. or Week-ends.

Adult Foster Care Home in a Chelsea area residence
When a nursing home isn't a necessity, choose residential living for seniors—24-hr. supervision, meds supervised—balanced meals
(313) 475-9396
Chuck & Kaye McNamara
McNamara's Care Home

THIS LARGE 2,020 s.f. 3-year-old ranch is on approx. 2 ac. of beautiful wooded land. Skylight & beautiful-cut stone fireplace in living room, large country kitchen w/lots of windows, 3 bedrooms, 2 baths, full basement. 2 1/2-car att. garage. Large deck & small one off MBR. Close to state land, 1 mile from county park on Clear Lake & 4 mi. N of I-94. Chelsea schools. \$147,900. BOB, 231-9777.

NICE RANCH on 10 ac., 3 BRs up & 1 down. 2 baths. Family rm w/SBBurn woodburner. Walkout site overlooks woods. 1-car garage. Stockbridge schools. \$88,000. MARY LEE, 517-851-8615.

EXCELLENT LOCATION ON BLACKTOP ROAD 25 mins W of Ann Arbor. 2 1/2 miles S of I-94 at Clear Lake exit. Large all brick Early American farm home on 3 ac. Front & back stairway, natural woodwork, sliding pocket doors, 30x40 pole barn, 1-car att. garage. Grass Lake schools. \$119,000. PAUL, 475-2621.

LOTS OF ROOM FOR EVERY MEMBER OF THE FAMILY! 2 BRs on 1st floor, 2 BRs on 2nd including MBR suite w/bath, scads of closet space & an adjoining rm that could be den/office. Nice kitchen/dining combo & huge family room w/lovely brick fireplace. Another cute fam rm/fireplace & bar in walkout lower level. Large 2 1/2-car garage w/heated workshop. A wonderful deck under tall, graceful trees in huge backyard. Dexter schools. Definitely worth a look! \$134,500. JIM, 475-2685.

LOVELY FAMILY HOME on beautiful wooded 10 ac. 3 miles W of Chelsea. 2,500 s.f. brick & aluminum home features: 3 BRs, 2 full baths includes master suite w/jacuzzi & screened deck, two 1/2 baths, beautiful brick fireplace wall in dining room, study, delightful kitchen w/Jenn-Aire range & planning center. Family room in full walkout basement, 20 min. W of Ann Arbor. Chelsea schools. \$197,000. PAUL, 475-2621.

NICE QUAD LEVEL on hilltop w/view of Chelsea. 5 BRs, 2 1/2 baths, fam rm & 2 1/2-car garage. On 2 country acres just outside Village limits. Gorgeous in-ground pool. An enjoyable family home! \$147,900. JOHN, 475-2064.

75 ACRES OF WONDERFUL FARM LAND w/742 s.f. 2-bedroom home w/2 1/2-car garage. 40 ac. sandy loam, 35 ac. wooded. Would make great horse farm! 5 min. W of Stockbridge 3 mi. W of M-52 on paved road. \$129,500. BILL, 475-9771.

VACANT LAND—We have parcels from .6 ac. to 80 ac. +. See us for your land needs and be prepared to start building at the first sign of Spring!

FRISINGER & ASSOCIATES
935 Main Street, Chelsea MI (313) 475-8681

Chelsea's 1st - established 1964

Paul Frisinger.....475-2621
Chuck Beck.....475-3889
Norm O'Connor.....475-7252
Herm Koehn.....475-2613
Bob Koch.....231-9777

John Pierson.....475-2064
Jim Utlar.....475-2685
Bill Darwin.....475-9771
Jo Ann Warywoda.....475-8674
Mary Lee Lantis.....(517)851-8615

+ AREA DEATHS +

Patricia Anne Baldwin John Desmond, Jr.

Chelsea
Patricia Anne Baldwin of Chelsea, age 62, died unexpectedly at her home Nov. 26, 1992. She was born July 24, 1930 in Detroit, the daughter of Walter and Evangeline (Vanoth) Mohrlock.

Mrs. Baldwin had been a resident of Chelsea since 1935 and was a former school teacher in Chelsea. She was a member of the Chelsea-Manchester Order of the Eastern Star and the First United Methodist church.

Surviving is her son, David R. Baldwin of Orlando, Fla., and her mother, Evangeline T. (Bobby) Mohrlock of Leesburg, Fla.

She was preceded in death by her father, Walter Mohrlock, on Jan. 13, 1986.

Private family services were held. Burial was in Oak Grove Cemetery, Chelsea.

Expressions of sympathy may be made to the McKune Memorial Library.

Arrangements were by the Staffan-Mitchell Funeral Home.

More and more farmers are looking at using shredded newsprint as bedding for livestock instead of straw or sawdust. The newsprint is much cheaper and does a better job soaking up moisture.

Menominee (Formerly of Ann Arbor)
John Desmond, Jr., 78, of Menominee, formerly of Ann Arbor, died Friday, Dec. 4 at BaySide Medical Center in Marinette, Wis.

He was born Aug. 26, 1918 in Ann Arbor, the son of John and Elma (Eschelbach) Desmond.

Survivors include his sister, Elma Gage of Chelsea, and two nephews.

Mr. Desmond lived for a short time at Blind Lake.

Funeral services and burial were held Tuesday in Menominee.



A daughter, Jordan Michelle, Nov. 4, at Northwest Medical Hospital, Houston, Tex., to Michael and Tracy McCulloch of Conroe, Tex. She has a five-year-old brother, Jory. Grandparents are Alan and Ann LeVan and Leroy and Joy McCulloch, all of Willis, Tex. Great-grandparents are Erma Worden of Napoleon and the late Zella LeVan. Great-great-grandmother is Claudia Green of Spring Arbor Manor.



ROD POWERS FAMILY of Chelsea provided free horse-drawn wagon rides downtown last Friday night during the annual Festival of Lights. It was one of the many popular attractions that brought many people downtown to enjoy the spirit of the season.

SCHOOL LUNCH MENU

- Wednesday, Dec. 9—Chili with cheese, peanut butter sandwich, carrot sticks, dessert, milk.
- Thursday, Dec. 10—Beef ravioli, dinner roll and butter, vegetables, plesauce, milk.
- Friday, Dec. 11—Cheese pizza, tossed salad with dressing, chocolate pudding, fresh fruit, milk.
- Monday, Dec. 14—Cheeseburger hash brown patty, dill pickles, mandarin oranges, milk.
- Tuesday, Dec. 15—Tomato soup, crackers, folded grilled cheese, vegetable sticks, peach half, milk.
- Wednesday, Dec. 16—Burrito/emitater tots, tossed salad with dressing, pineapple, milk.
- Thursday, Dec. 17—Hot dog, potato chips, cole slaw, fresh fruit, milk.
- Friday, Dec. 18—Christmas dinner, chicken, whipped potatoes with gravy, cranberry sauce, green beans, dinner roll and butter, strawberry shortcake, milk.

Dexter Township Board Proceedings

Regular Meeting of the Dexter Township Board
Date: Tues., Dec. 1, 1992, 7:30 p.m.
Place: Dexter Township Hall.
Present: Jim Drolett, Julie Knight, William Eisenbeiser, Earl Doletzky, Harley Rider.

Meeting called to order by Supervisor Drolett.
Agenda approved.
Moved by Knight, supported by Doletzky, to approve the minutes of the Nov. 10, 1992 meeting. Carried.
Moved by Doletzky, supported by Eisenbeiser, to deny the request of Robert Thornton to place East Glennbrook Road on the list of approved private roads. Carried.
Moved by Doletzky, supported by Eisenbeiser, to accept the bid of McNamee, Porter and Seeley, Inc., for a sewer service feasibility study, contingent upon preparation of a contract detailing the scope of the work to be completed. Carried.
Moved by Knight, supported by Doletzky, to adjourn to executive session to discuss litigation. Carried at 9:45 p.m.
The Board returned to regular session at 10:00 p.m.

Moved by Eisenbeiser, supported by Knight, to authorize Jim Drolett and Harley Rider to attend the MTA convention and pay the fee totaling \$162. Carried.
Moved by Eisenbeiser, supported by Doletzky, to adjourn the meeting. Carried.
Meeting adjourned.
Respectfully submitted,
William Eisenbeiser,
Dexter Township Clerk.

PORTRAITS

A LASTING HOLIDAY GIFT



Make Your Appointment Early
Village Chelsea Shopping Center
Instant 1090 South Main St.
Photo 475-5920

ALL THE BEST FOR YOU AND YOUR FAMILY...

from your Farm Bureau Insurance Agent

Get all the protection you need—for your home, family, life, auto, and retirement—from the insurance professional right in your own hometown. Your Farm Bureau insurance agent has the skill, knowledge, and experience to tailor an insurance plan that's just right for you. Call today.

DAVE ROWE CPCU
121 S. Main
Chelsea, MI 48118
Phone: 475-9184

FARM BUREAU INSURANCE

Making your future a little more predictable.

ARNET'S - BECKER'S

MERGER SALE NOW IN PROGRESS
Save Up to 50%

Fine Memorials Since 1904
4495 JACKSON RD., ANN ARBOR

CLAIRE SAWICKI
Business Office

UNIGLOBE Chelsea Travel

Member **ASTA** American Society of Travel Agents

In the **CHELSEA SHOPPING CENTER**
1070 S. Main St., Chelsea

TRAVEL. THE WAY IT WAS MEANT TO BE.

Forget everything you know, feel and believe about travel agencies. Until you've worked with UNIGLOBE, you haven't experienced the kind of service you deserve. We make travel planning effortless. Whether traveling for business or pleasure, alone or with a group. So what are you waiting for? Start packing. Book with UNIGLOBE today.

Monday-Friday 8:30 a.m.-5 p.m.
Evenings and Saturday by appointment
Ph. 475-3110

TOYS FOR TOTS AND TEENS

FORD MERCURY

PALMER MOTOR SALES, INC.
SINCE APRIL 15, 1912
222 S. Main Street
CHELSEA MICH 48118-0070
313-475-1301

November 20, 1992

HAPPY HOLIDAYS!!!!
PALMER FORD-MERCURY NEEDS YOUR HELP - AGAIN!!!! Once again we are sponsoring a "TOYS FOR TOTS AND TEENS" in co-operation with the Chelsea Social Services.

We need enough toys for - every needy child in Chelsea a hospitalized child in need during the year and to make a brighter birthday for some boy or girl less fortunate.

For the last two years some of the North School second and third graders opted to buy toys for our toy drive in place of a gift exchange. This year we have been contacted by an Eagle Scout who is making wooden blocks for the toy drive to earn his badge. Are you as prepared to share your Christmas Season with someone less fortunate as these wonderful and thoughtful children have? By contributing to the toy drive, you are helping to free-up moneys that can be used for other needs, i.e. food and clothing for senior citizens and single parents.

With the merging of Chelsea Social Services and Faith-In-Action, we have three times as many needy families and persons then ever before.

Dates for the toy drive are November 25th through December 17th. Please bring **NEW, UNWRAPPED**, toys to the Palmer Ford-Mercury showroom, 222 S. Main Street, Chelsea. Palmer's is open daily until 6 p.m. and until 8 p.m. on Mondays and Thursdays and until 3 p.m. on Saturdays.

Your donation entitles you to register for a 13" COLOR TELEVISION donated by Palmer Ford-Mercury. Area business have also donated gift certificates. Get a smile and a feeling of joy for having helped someone less fortunate have a merry Christmas.

We'd like to thank those persons that thought of this program last year after the toy drive was completed. They took advantage of special after Christmas savings, and have given us some great toys to start the 1992 toy drive with.

We hope to see you and a toy soon.

Suzie Palmer Weber
Suzie Palmer Weber

Jeff Weber
Jeff Weber

George Palmer
George Palmer

Limited Edition CHELSEA ORNAMENT

Back imprinted "Chelsea Festival of Lights, 1992" Emerald Green with Silver Print

Chelsea Clock Tower

Actual Size 3 1/4"

ONLY \$10.00

Proceeds to fund the Annual Festival of Lights

Limited number available—ORDER SOON!!

Mail your check or money order to:
Chelsea Area Chamber of Commerce
P.O. Box 94
Chelsea, MI 48118

Ornaments may be picked up on or after December 4th at Dayspring Gifts, Main St., Chelsea.

Please reserve # _____ Chelsea Ornaments at \$10.00 each.
Total Enclosed \$ _____ (Check or Money Order, ONLY)

NAME _____
ADDRESS _____
PHONE _____



GUITARISTS AND SINGERS provided the appropriate Christmas music at the living creche last Friday downtown during the Festival of Lights. Winter-like weather didn't seem to dampen their enthusiasm.



IT WAS A CHILLY NIGHT for those who took part in the living creche downtown last Friday as part of the annual Festival of Lights. The creche, which also included two real sheep, was set up on the vacant lot next to McKune Memorial Library.

Pennington LP GAS
 "Count on us to keep the heat on!"

13400 M-52
 P.O. Box 490
 Stockbridge, MI 49235
 (517) 851-7577
 Toll Free 1-800 274-5599

Education Foundation Gives Gift to Schools

Chelsea Education Foundation is donating an 8mm camcorder and microphone to the Chelsea School District. It is expected the equipment will be under the jurisdiction of the Community Education Office where a borrowing procedure will be developed. It will probably involve a written request and deposit as the equipment is of good quality and requires some care and training to use.

Different community organizations and school groups will be able to apply to use the equipment. Permission for use will be granted to projects of an educational nature. The possibilities for its use are endless and two programs already have major plans for it.

The Enrichment Triad Program's fifth grade Community Problem Solving Teams at North and South Elementary schools will be the first users from December through June '93. The North School Notifiers and the South School Solvers, as they have called themselves, are taping grade level shows at their schools. These two groups are using research techniques and problem solving skills to take care of a problem they have identified. The video tapings are part of their solutions.

The North Notifiers' problem is: "In what ways might we create new opportunities for students in grades K through 5 so they may share their classroom news, interests and talents so that everyone can see our special, spirited school?" They will produce a video called "North Exposures."

The South Solvers will produce the "South School Special." Their identified problem is: "In what ways might we create a new, fun and interesting tradition for K-5 students to share their classroom news, learning and talents so that everyone can come together and celebrate the joy of learning?"

Alex Weddon of Chelsea Cable, Mrs. Melody Reifel, former producer at Detroit's Channel 2 and William Coelius, Chelsea High school communications instructor have all helped.

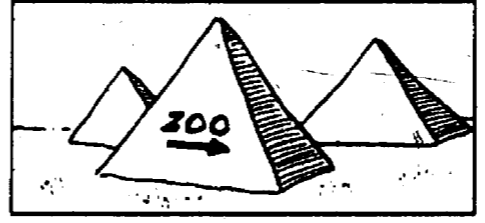
Mrs. Ruth Stielstra, Triad teacher, and both her Problem Solving Teams want all the students, teachers, parents and community members to be able to see these videos and see their friends and relatives in them sharing what they've learned. The videos will be made available and shown on Cable Channel 22.

The next project to use the equipment will be the Waterloo Recreation Area Project (WRAP) which takes place in the summer. Sponsored by the Education Foundation, this environmental education program serves kindergarten through eighth grade students for a week at the George Eddy Geology Center. They will videotape program activities for educational and promotional purposes.

A group of parents, fifth grade Triad students, school district personnel and Education Foundation

members organized a special gathering Tuesday, Dec. 8 at the Chelsea Depot to celebrate the gift of equipment. The fifth graders had a chance to thank the Foundation members and explain their project in greater detail. Refreshments were provided by the parents.

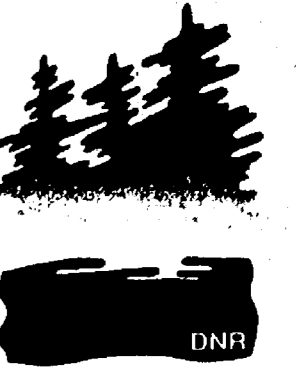
For more information about Foundation activities call 475-8155. For more information about Triad activities call Mrs. Stielstra at 475-3715 or 475-3713. Both programs provide opportunities for members of the community to be involved in education in meaningful ways.



The earliest known zoo was established by Queen Hatshepsut of Egypt about 1500 B.C.

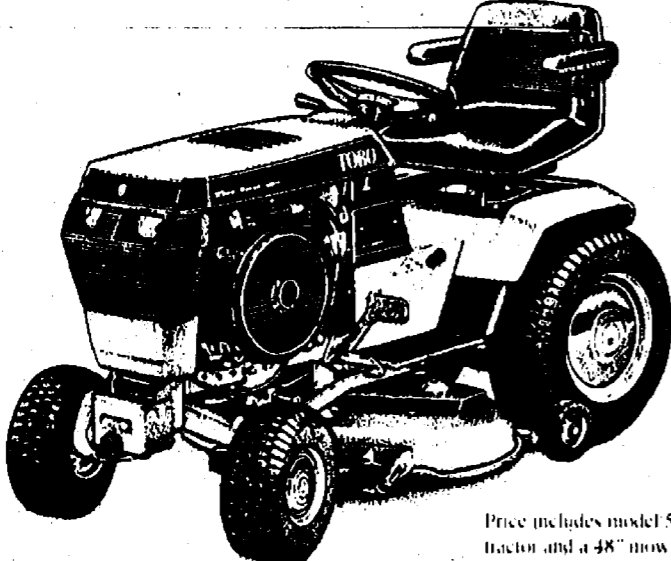
Buy Recycled Products.

They're Worth Our Environment



When you see news happening call 475-1371!

CHRISTMAS WISH LIST:



Price includes model 520 H tractor and a 48" mowing deck

THE TORO 520-H IS BUILT RUGGED AND TOUGH.

- New Easy Steer™ steering system helps make mowing effortless.
- 20-HP Toro Power Plus™ engine with cast-iron front axle and engine housing and steel gears handles roughest terrain.
- Exclusive no-tools Attach-A-Matic™ hitch system allows a quick, easy change of attachments.
- Mow, till, plow, even remove snow with ease.
- Come in to your local dealer today.



Haven't you done without a Toro long enough?

We have snowblades and tire chains in stock!

JOHNSON'S HOW-TO
LAWN & GARDEN SERVICE
 station

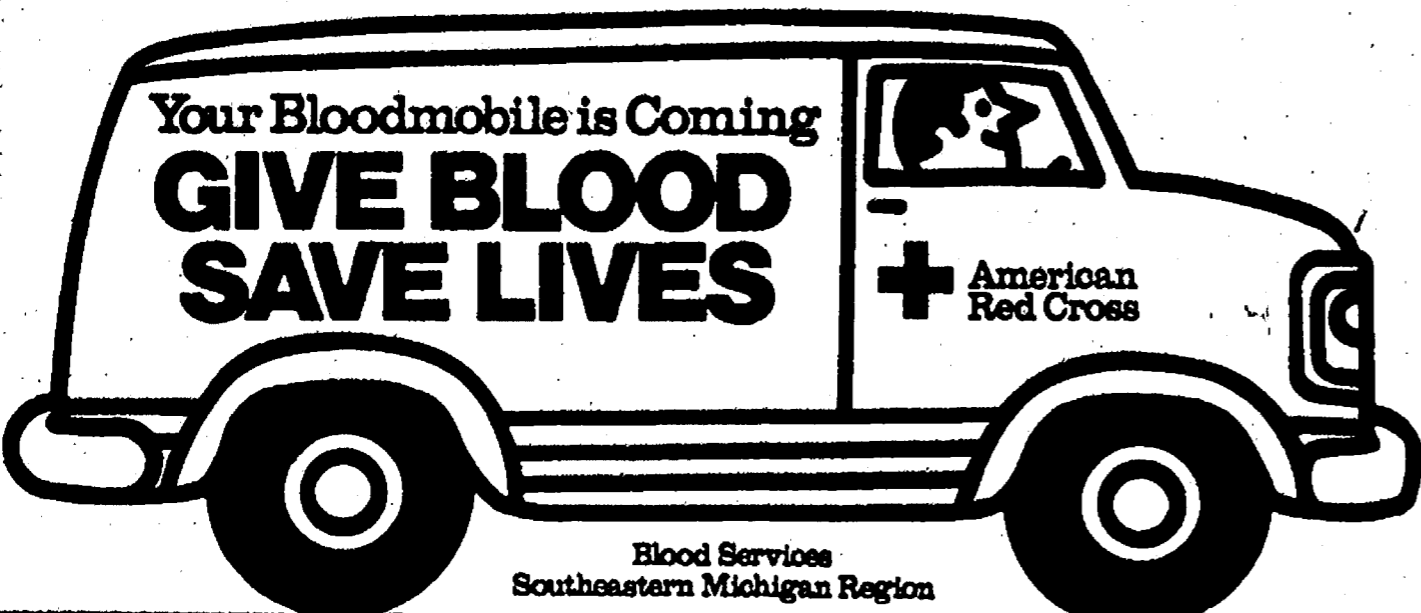
Open
 Mon. - Fri. 8 AM - 8 PM
 Sat. 8 AM - 5 PM
 Sun. 10 AM - 2 PM

Service Station Hours
 Mon. - Sat. 8 AM - 5 PM

110 N. Main St.
 Downtown Chelsea

Friendly, Knowledgeable Service Close To Home

Your Full Service Hardware Store
 ... and Much More!



Blood Services
 Southeastern Michigan Region

Thursday, Dec. 10 — 8 a.m. to 8 p.m.

at OUR SAVIOR LUTHERAN CHURCH — 1515 S. Main
 FOR APPOINTMENT PHONE 475-8139

ORTHODONTIST
RAYMOND P. HOWE
 D.D.S., M.S.

515 South Main Street
 Chelsea
 Telephone 313-475-2260

Examination Appointment without charge

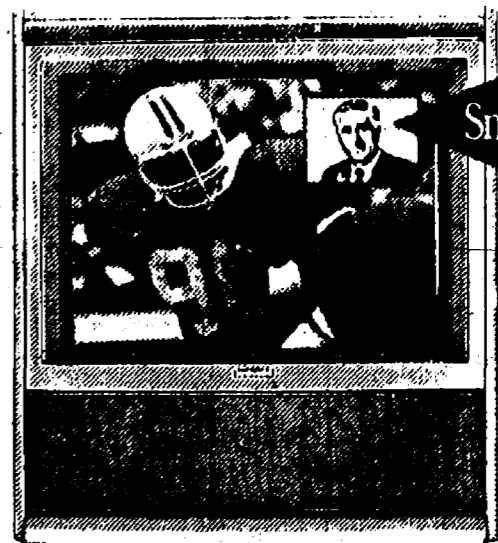
MAGNAVOX

Smart. Very smart.®

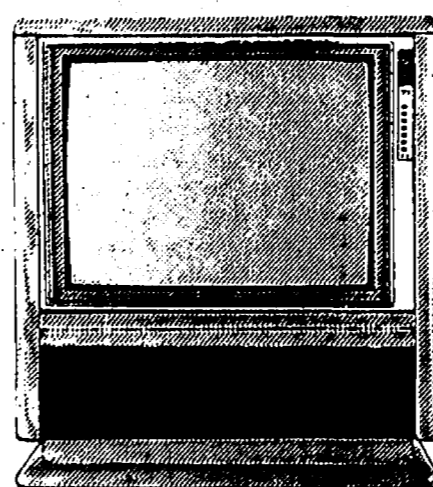
31" Stereo Color Monitor/Receiver with "Smart Window" Color Picture-in-Picture and Universal Learn Remote

- 12.5 watts RMS per channel, 8 Ohms, 50Hz-20kHz, 0.5% THD
- "Smart Window" — Color Picture-in-Picture when used with a VCR
- Universal Remote for TV, VCR and Cable
- Remote four-way directional control of picture adjustments and feature selection
- Comb filter delivering 600 lines horizontal resolution

LIST PRICE \$1,649
\$1,299
 #CP 5180 A



Smart Window



27" STEREO COLOR MONITOR/RECEIVER
 WITH TV/VCR UNIVERSAL REMOTE

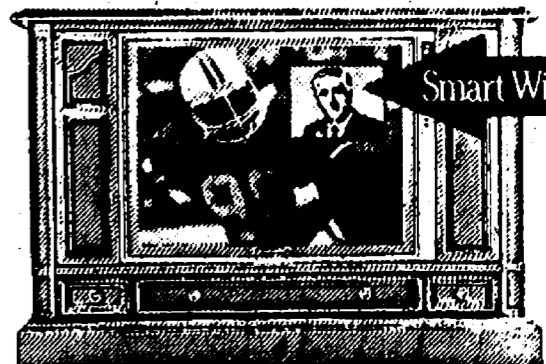
LIST PRICE \$649
\$599
 #CS 4740 A

27" STEREO COLOR CONSOLE
 WITH "SMART WINDOWS" PICTURE-IN-PICTURE



LIST \$899
\$779

#CP 4770 A
 Also Available With VCR Storage Below



Smart Window

LIST PRICE \$799
\$699
 #CP 4761 P

HEYDLAUFF'S
 APPLIANCES & ELECTRONICS

90 DAYS SAME-AS-CASH

113 NORTH MAIN STREET In DOWNTOWN CHELSEA 313 / 475-1221